

Name \_\_\_\_\_ Sec \_\_\_\_\_ Roll No. \_\_\_\_\_

CODE-A

**BURNPUR RIVERSIDE SCHOOL, BURNPUR**

**PERIODIC TEST I – [2024-25]**

**ENGLISH**

**CLASS – IX**

**Time: 1 ½ Hours**

**Maximum Marks: 40**

**GENERAL INSTRUCTIONS**

1. The Question Paper contains questions from GRAMMAR, LITERATURE and WRITING SKILLS.
2. Attempt the questions based on specific instructions for each part.

1 In the following passage there is a blank in each line. Fill in the blanks with the help of the options that follow: 3

a I ---- the sack of corn meal and

- i) taking
- ii) took
- iii) takes
- iv) taken

b ----- it to where the

- i) bought
- ii) carry
- iii) bring
- iv) carried

c canoe was -----.

- i) kept
- ii) hide
- iii) keep
- iv) hidden

2      There is one error in each line of the passage. Identify the error and 3  
write the correct answer along with it:

- L1    There are several reasons for the headache.
- L2    Sometimes, headache can be a sign of a underlying disease.
- L3    More then medicines, yoga therapy eminently suits any needs.

3 A Read the given extract to attempt the questions that follow: 4

“I chatter chatter as I flow,  
To join the brimming river,  
For men may come and men may go  
But I go on forever.”

- a The extract is taken from the poem -----
- i) The Road Not Taken
  - ii) The Brook
  - iii) The Seven Ages
  - iv) Song of the Rain
- b The Brook chatters by -----
- i) honking like a horn
  - ii) jumping
  - iii) fighting
  - iv) making a loud noise as it rushes over different surfaces.
- c The final destination of the Brook is -----.
- d What does the word ‘thorpes’ mean in the poem?

3 B Read the given extract to attempt the questions that follow: 4

“We have always touched the feet of God,  
elders and teachers. We considered that  
as a mark of respect. It is a great tradition  
but today the reverse has happened.”

a Where is the extract taken from?

- i) Keeping It from Harold
- ii) How I Taught My Grandmother to Read
- iii) Best Seller
- iv) A Dog Named Duke

b Who is the speaker?

- i) Sudha Murthy
- ii) granddaughter
- iii) grandmother
- iv) the old lady

c Which traditional Indian custom is the speaker referring to?

d What does the narrator mean by “reverse”?

4 Answer the following questions in 30 – 40 words: 6

a Why did the narrator’s grandmother never go to school?

b Describe the two roads that the poet comes across.

c How was Chuck injured in the accident?

5 Answer ANY 2 questions in 120 words: 10

a Give the character sketch of Grandmother.

- b Why do you think Chuck Hooper's appointment as Assistant National Sales Manager is considered to be a tribute to Duke?
- c The brook appears to be a symbol for life. Pick out examples of parallelism between human life and the brook from the poem.
- 6 You are Rohan / Rishika, the Sports Secretary of RJ Public School, 4 Ajmer. Write a notice asking students interested in Basketball to give their names for selection for the School Basketball Team. Give details of trial, selection etc. (Word Limit 50)
- 7 Imagine that you are Anita / Ankit studying in Father Angel School, 6 Nagpur. You have received a letter from your mother who has asked you to describe your new school. Write a reply in 120 words.

=====

Name \_\_\_\_\_ Sec \_\_\_\_\_ Roll No. \_\_\_\_\_

CODE- B

BURNPUR RIVERSIDE SCHOOL, BURNPUR

PERIODIC TEST-I [2024-2025]

SUBJECT: ENGLISH

CLASS – IX

Time :1 ½ Hours

Maximum Marks: 40

GENERAL INSTRUCTIONS:

1. This paper consists of 7 questions and all questions are compulsory.
2. Separate instructions are given with each question, wherever necessary.
3. Do not exceed the prescribed word limit while answering the questions.

- 1 Complete the following passage by choosing the correct option. 1x3=3

It was a rainy day. Traffic (a)..... busy on the road.  
A (b)..... hit a car badly in the market. Five commuters were badly injured while one person (c).....on the spot.  
The injured persons were taken to the nearest hospital. The local people were of great help.

a) (i) will be (ii) was (iii) is (iv) has been

b) (i) speeding bus (ii) speeded bus (iii) sped up bus  
(iv) speed bus

c) (i) was died (ii) had died (iii) died (iv) is died

- 2 The following passage have not been edited. There is an error in each line. Write the incorrect word and the correct word. 1x3=3

- L1 It is truth that parents are  
L2 more valuable than any other  
L3 things in the world for a child.

3 Read the given extracts and answer the questions that follow.

A With many a curve my banks I fret  
By many a field and fallow,  
And many a fairy foreland set  
With willow-weed and mallow. 1x4=4

- a Name the poem and the poet.
- b What are some of the plants found growing along the brook's banks?
- c Choose the option that best describes the brook's journey in the given stanza. It is a journey full of \_\_\_\_\_  
i) comfort and luxury  
ii) trials and tribulations  
iii) sorrow and misery  
iv) joy and laughter
- d The brook seems to be 'fretting' in the given stanza. This word has been used by the poet to depict the \_\_\_\_\_ of the flowing brook.  
i) force  
ii) kindness  
iii) silence  
iv) beauty

B She nodded but did not reply. I did not understand and forgot about it. In the night after dinner, we were sleeping in the open terrace of the house. It was a summer night and there was full moon. 1x4=4

- a Name the lesson and the author.
- b Who are 'she' and 'I' in the above extract?

- c What do you mean by the word ‘nodded’?  
i)move head in agreement ii)rise iii)disagree iv)refuse
- d What was ‘she’ upset about?  
i) she was not able to read. ii)she was not able to cook iii)she was not able to attend the marriage party iv)none of the above
- 4 Answer the following short questions in 30-40 words. 2x3=6
- a In 1953, Hooper was a favoured young man. How? Explain.
- b Avva or the narrator’s grandmother was a wonderful student. Justify with the help of the story.
- c Describe the two roads that the author comes across.
- 5 Answer the following long questions in 120 words. Attempt any 2 5x2=10  
out of 3.
- a The old lady in ‘Kashi Yatre’, Sudha Murthy’s’ grandmother and Sudha herself share some common values of characters. What values are they? How are they important for our contemporary society?
- b When a person loses something, he is shocked and gets into a state of denial leading to anger. In such a situation, coping well leads to acceptance and a changed way of living in view of the loss. Taking cues from what happened or might have happened to Hooper, write your views on ‘Coping with Losses’.
- c Obstacles and hurdles are a part and parcel of man’s life. Discuss with reference to the poem ‘The Brook’.
- 6 You are Tripti/Trilok, Secretary, ABC School, Cricket Association. 4x1=4  
It has been decided that a meeting of all the members of the school cricket team be held to discuss plans and strategies for the coming Zonal Tournament. Write a notice in not more than 50 words, informing the members of the team about the meeting and requesting them to attend it.

- 7 Your cousin is a brilliant student but he is not keeping good health because he avoids homemade food and is very fond of eating outside. Write a letter telling him/her about the harmful effects of junk food and advising him/her to maintain good health in not more than 120 words. You are Arpit/Arpita of 125, Lawrence Road, New Delhi. 6x1=6
- =====



Name \_\_\_\_\_ Sec \_\_\_\_ Roll No. \_\_\_\_

CODE: A

BURNPUR RIVERSIDE SCHOOL, BURNPUR

PERIODIC TEST 1: [2024-2025]

MATHEMATICS

CLASS: IX

TIME: 1 ½ HOURS

MAXIMUM MARKS: 40

**GENERAL INSTRUCTIONS:**

- 1) This question paper contains 26 questions. All questions are compulsory.
- 2) This question paper is divided into five Sections – A,B,C,D and E.
- 3) In Section A, Questions no. 01 to 18 are MCQs and Questions no. 19 to 20 are Assertion- Reason based questions of 01 mark each.
- 4) In Section B, Questions no. 21 and 22 are Case based questions carrying 4 marks each with sub-parts of the values of 01,01 and 02 marks each respectively.
- 5) In Section C, Questions no. 23 to 24 are Very Short Answer type (VSA) questions, carrying 2 marks each.
- 6) In Section D, Questions no. 25 is Short Answer type (SA) questions carrying 3 marks each.
- 7) In Section E, Questions no. 26 is Long Answer type (SA) questions carrying 5 marks each.
- 8) There is no overall choice. However, an internal choice is provided in 5 marks question, 3 marks question and 2 marks question.

**Section-A**

1. The value of  $(-4\sqrt{20}) \div (\sqrt{5})$  is 1  
(a) a rational number (b) an irrational number  
(c) a natural number (d) a whole number
2. The value of n, for which,  $\sqrt{n}$  is a rational number is 1  
(a) 5 (b) 121 (c) 3 (d) 0.2
3. The positive square root of  $7 + \sqrt{48}$  is 1  
(a)  $7 + 2\sqrt{3}$  (b)  $7 + \sqrt{3}$  (c)  $2 + \sqrt{3}$  (d)  $7 - 2\sqrt{3}$
4. The Indian Mathematician, who found the value of  $\pi$  correct to four 1  
decimal places is  
(a) Aryabhatta (b) Bhaskara (c) Brahmagupta (d) S Ramanujan
5. Number of solutions a linear equation in two variables has 1  
(a) one (b) two (c) zero (d) infinitely many

6. A linear equation in two variables is of the form  $ax+by+c=0$ , where 1  
 (a)  $a \neq 0, b \neq 0$  (b)  $a=0, b \neq 0$  (c)  $a \neq 0, b=0$  (d)  $a=0, b=0$
7. The correct solution of the equation  $x - y = 12$  is 1  
 (a) (3,-6) (b) (0,12) (c) (12,0) (d) (12,-12)
8. If (1,-2) is a solution of the equation  $2x - y = p$ , then the value of  $p$  is 1  
 (a) 4 (b) -3 (c) 0 (d) -5
9. The co-ordinates of the origin are 1  
 (a) (3,0) (b) (0,0) (c) (0,-6) (d) (0,1)
10. The abscissa of the point (-7,-2) is 1  
 (a) -7 (b) 0 (c) -2 (d) 1
11. The quadrant in which the point (9,-8) lies is 1  
 (a) I (b) II (c) III (d) IV
12. The point  $(x,y) = (y,x)$ , if 1  
 (a)  $x \neq y$  (b)  $x = y$  (c)  $x = -y$  (d)  $-x = y$
13. Three or more points which lie on the same line are called 1  
 (a) adjacent points (b) non-collinear points  
 (c) collinear points (d) acute points
14. The measure of the angle formed by the bisectors of two adjacent 1  
 supplementary angles is  
 (a)  $60^\circ$  (b)  $30^\circ$  (c)  $90^\circ$  (d)  $180^\circ$
15. Two complementary angles are in the ratio 2:3, then the smaller angle is 1  
 (a)  $54^\circ$  (b)  $30^\circ$  (c)  $66^\circ$  (d)  $36^\circ$
16. The semi-perimeter of an equilateral triangle is 60cm. Then the 1  
 perimeter of the triangle is  
 (a) 540cm (b) 30cm (c) 40cm (d) 120cm
17. The area of an equilateral triangle with side  $x$  is 1  
 (a)  $(\sqrt{3}/4)x^2$  (b)  $(4/\sqrt{3})x^2$  (c)  $x^2$  (d)  $2x$
18. The area of an isosceles right angled triangle with hypotenuse 10cm is 1  
 (a)  $40\text{cm}^2$  (b)  $30\text{cm}^2$  (c)  $25\text{cm}^2$  (d)  $35\text{cm}^2$

**DIRECTION:** In the question numbers 19 and 20, a statement of assertion(A) is followed by a statement of Reason(R).

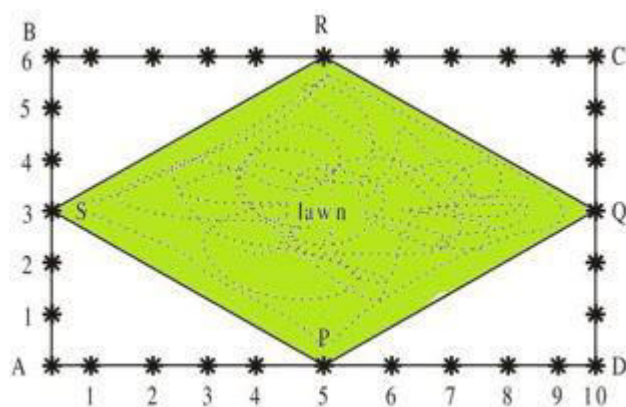
Choose the correct option from the codes (a), (b), (c) and (d) as given below:

- (a) Both Assertion and Reason are correct and Reason is correct explanation for Assertion.
- (b) Both Assertion and Reason are correct and Reason is not correct explanation for Assertion.
- (c) Assertion is true but Reason is false.
- (d) Assertion is false but Reason is true.

19. A (Assertion): The angles of a triangle are in the ratio 7:5:3, then the triangle is right angled triangle. 1  
 R (Reason): The sum of the angles of a triangle is  $180^\circ$ .
20. A (Assertion): The area of an equilateral triangle is  $16\sqrt{3} \text{ cm}^2$ , if the side is 8cm. 1  
 R (Reason): The area of an equilateral triangle is  $(\sqrt{3}/4) x^2$ , where x is each side of the triangle.

### Section-B

21. The Class IX students of a secondary school in Krishinagar have been allotted a rectangular plot of land for their gardening activity. Sapling of Gulmohar are planted on the boundary at a distance of 1m from each other. There is a lawn PQRS in the ground as shown in below figure. 4



- (a) What are the coordinates of C, taking A as origin?  
 (b) What are the coordinates of R, taking A as origin?  
 (c) Find each side of the lawn.

OR

Find the Area of the lawn.

22. While selling clothes for making flags, a shopkeeper claims to sell each piece of cloth in the shape of an equilateral triangle of each side 10 cm while actually he was selling the same in the shape of an isosceles triangle with sides 10 cm, 10 cm and 8 cm. 4
- (a) Find the area of an equilateral triangular flag?  
 (b) If the shopkeeper sells 500 equilateral triangular flags, then find its area.  
 (c) Find the area of an isosceles triangular flag.

OR

How much cloth was he saving in selling each flag?

(use  $\sqrt{3}=1.73$  and  $\sqrt{21}=4.56$ )

### Section-C

23. If  $(m-2, 2m+1)$  lies on the graph of the equation  $2x+3y-10=0$ , find  $m$ . 2  
OR

Find the value of  $k$ , if  $x=2, y=1$  is a solution of the equation  $2x+3y=k$ .

24. Write the co-ordinates, if the point lies on  $y$ -axis at a distance of  $-7$  units from the  $x$ -axis. 2

### Section-D

25. If a transversal intersects two lines such that the bisectors of a pair of corresponding angles are parallel, then prove that the two lines are parallel. 3

OR

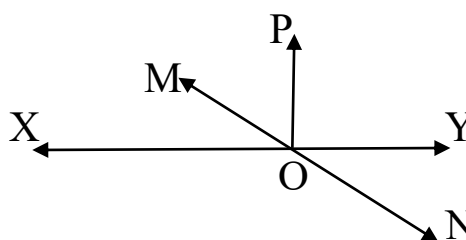
Lines  $XY$  and  $MN$  intersect at  $O$ .

If  $\angle POY = 90^\circ$ ,  $\angle POM = a$ ,

$\angle MOX = b$ ,  $\angle XON = c$

and  $a:b = 2:3$ ,

find  $a$ ,  $b$  and  $c$ .



### Section-E

26. The sides of a triangular plot are in the ratio  $3:5:7$  and its perimeter is  $300\text{m}$ . Find its area. (Take  $\sqrt{3} = 1.73$ ) 5

OR

A triangular park  $ABC$  has sides  $120\text{m}$ ,  $80\text{m}$  and  $50\text{m}$ . A gardener has to put a fence all around it and also plant grass inside. How much area does he need to plant? Find the cost of fencing it with barbed wire at a rate of  $\text{Rs.}20$  per meter leaving a space  $3\text{m}$  wide for a gate on one side.

Name: \_\_\_\_\_ Sec: \_\_\_\_\_ Roll No: \_\_\_\_\_

CODE: B

**BURNPUR RIVERSIDE SCHOOL, BURNPUR**

**PERIODIC TEST-I [2024-2025]**

**MATHEMATICS**

**CLASS: IX**

**TIME: 1 ½ HOURS**

**MAXIMUM MARKS: 40**

**General Instructions:**

- i) This question paper contains 26 questions and all the questions are compulsory.
- ii) This question paper is divided into 05 sections – A, B, C, D and E.
- iii) In Section A, Question No. 01 to 18 are MCQs and Question No. 19 and 20 are Assertion-Reason based questions of 01 mark each.
- iv) In section B, Question No. 21 and 22 are Case based Questions (CBQ) carrying 04 marks each with sub-parts of the values of 01, 01 and 02 marks each respectively.
- v) In section C, Question No. 23 and 24 are Very Short Answer (VSA) type questions carrying 02 marks each.
- vi) In section D, Question No. 25 is Short Answer (SA) type question carrying 03 marks.
- vii) In Section E, Question No. 26 is Long Answer (LA) type questions carrying five marks.
- viii) There is no overall choice. However, an internal choice is provided in 05 marks, 03 marks and 02 marks questions.

**SECTION A**

**Q1** The value of  $\frac{1}{\sqrt{8-\sqrt{32}}}$  is equal to: (1)

- a)  $\sqrt{2}$                       b)  $\frac{\sqrt{4+2\sqrt{2}}}{4}$                       c)  $\frac{\sqrt{4-2\sqrt{2}}}{4}$                       d)  $-\frac{1}{\sqrt{2}}$

- Q2** If  $\sqrt[4]{\sqrt[3]{2^2}} = ?$  (1)  
 a)  $2^{-\frac{1}{6}}$       b)  $2^{-6}$       c)  $2^{\frac{1}{6}}$       d)  $2^6$
- Q3** Which of the following is an irrational number? (1)  
 a)  $\sqrt{5}$       b)  $\sqrt{121}$       c)  $\sqrt{\frac{9}{16}}$       d) 0.3
- Q4** Which of the following is an irrational number? (1)  
 a) 0.14      b)  $0.14\overline{16}$       c)  $0.\overline{1416}$       d) 0.401161...
- Q5** Which of the following is the solution of  $x - y = 12$  (1)  
 a) (4,3)      b) (0,12)      c) (12,0)      d) (12,12)
- Q6** Which of the following is not a linear equation ? (1)  
 a)  $3(x + 8) = 2x + 7$   
 b)  $x(x + 3) = -x(3 - x) + 8$   
 c)  $x(x - 8) = -3x(x - 5)$   
 d)  $x^2 + 4x = x(x + 8) + 5$
- Q7** The points  $(a, -a)$  always lies on the line : (1)  
 a) x-axis      b) y-axis      c) line  $y = x$       d) line  $y + x = 0$
- Q8** What will be the coefficient of  $y$  in the linear equation, (1)  
 $5(2x - 4) + 3x + 4y - 7 = 0$   
 a) 9      b) 7      c) 3      d) 4
- Q9** Abscissa of all the points on the x-axis is ? (1)  
 a) 0      b) 1      c) 2      d) any number
- Q10** Any point on the y-axis is of the form ? (1)  
 a) (0, y)      b) (y, 0)      c) (0, x)      d) (y, y)
- Q11** Equation of y-axis is: (1)  
 a)  $x = 0$       b)  $y = 0$       c)  $x + y = 0$       d)  $x = y$
- Q12** If the point (2, -4) and (2,4) lies on a line, then this line is : (1)  
 a) parallel to x-axis  
 b) parallel to y-axis  
 c) passes through the origin  
 d) none of these

- Q13** The measure of an angle is thrice its supplement. Then the angle is: (1)  
 a)  $30^\circ$                       b)  $60^\circ$                       c)  $135^\circ$                       d)  $45^\circ$
- Q14** The sum of two angles which are complimentary is (1)  
 a)  $90^\circ$                       b)  $180^\circ$                       c)  $-90^\circ$                       d)  $-180^\circ$
- Q15** If the angles of the triangles are in the ratio 7: 5: 3, then the triangle is ? (1)  
 a) right angled triangle  
 b) acute angled triangle  
 c) obtuse angled triangle  
 d) an isosceles triangle
- Q16** If  $a, b$  and  $c$  are the sides of the triangle, then the area of the triangle, when each of the sides is doubled, will be (1)  
 a)  $\sqrt{s(s-2a)(s-2b)(s-2c)}$   
 b)  $2\sqrt{s(s-a)(s-b)(s-c)}$   
 c)  $4\sqrt{s(s-a)(s-b)(s-c)}$   
 d) None of these
- Q17** The perimeter of an equilateral triangle is 60 cm. Then the area is ? (1)  
 a)  $10\sqrt{3} \text{ cm}^2$       b)  $15\sqrt{3} \text{ cm}^2$       c)  $20\sqrt{3} \text{ cm}^2$       d)  $100\sqrt{3} \text{ cm}^2$
- Q18** The altitude of an equilateral triangle is 6 cm. Then the length of each side is ? (1)  
 a) 4 cm                      b)  $4\sqrt{3}$  cm                      c) 3 cm                      d)  $3\sqrt{3}$  cm
- Q19 Assertion(A):** If one angle of the linear pair is acute, then the other angle will be obtuse. (1)  
**Reason(R):** Angles forming linear pair are supplementary angles in nature.  
 a) Both Assertion (A) and Reason (R) are true and Reason (R) is the correct explanation of Assertion (A).  
 b) Both Assertion (A) and Reason (R) are true but Reason (R) is NOT the correct explanation of Assertion (A).  
 c) Assertion (A) is true but Reason (R) is false.  
 d) Assertion (A) is false but Reason (R) is true.

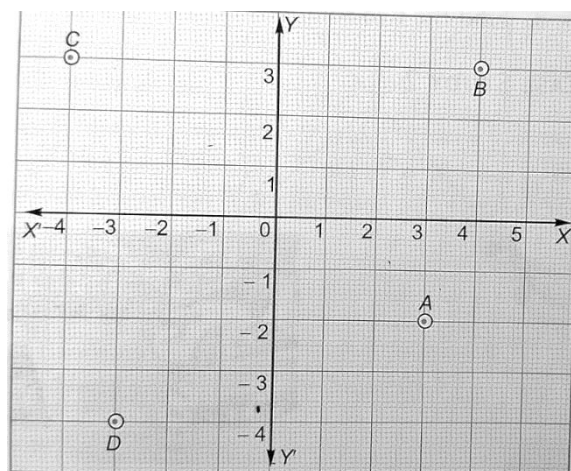
**Q20 Assertion(A):** Area of an equilateral triangle with side 4 cm is  $4\sqrt{3} \text{ cm}^2$  (1)

**Reason (R):** The formula of area of equilateral triangle is  $\frac{\sqrt{3}}{4} \text{ side}^2$ .

- a) Both Assertion (A) and Reason (R) are true and Reason (R) is the correct explanation of Assertion (A).
- b) Both Assertion (A) and Reason (R) are true but Reason (R) is NOT the correct explanation of Assertion (A).
- c) Assertion (A) is true but Reason (R) is false.
- d) Assertion (A) is false but Reason (R) is true.

### **SECTION B**

**Q21** Four friends A, B, C and D are playing with the ball. Their positions are shown in the cartesian plane as follows:



- (i) Write the coordinates of player A (1)
- (ii) Write the coordinate of player C (1)
- (iii) Write the coordinate of the player whose perpendicular distance from the x-axis is 4 units. (2)

**OR**

Which player is in quadrant II. Find the distance of this player from the player B. (2)



**Q22** A triangular field has vertices A, B and C and the lengths of sides are 130m , 140m and 150m. The farmer wants to fence his field all round leaving a space of 5m wide, with a gate on one side. The cost of fencing it with the barbed wire is ₹20 per meter. After fencing the farmer cultivates carrots in his fields.

- (i) Draw the figure of this triangular field described in the question. (1)
- (ii) Find the perimeter of the field. (1)
- (iii) Find the area of the field. (2)

**OR**

Find the cost of fencing the field with the barbed wire. (2)

### **SECTION C**

**Q23** If  $(m - 2, 2m + 1)$  lies on the graph of the equation  $2x + 3y - 10 = 0$ , find the values of  $m$  ? (2)

**OR**

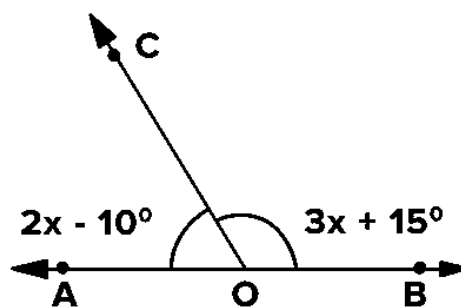
Write  $\sqrt{7}y = 2x$  as a linear equation of the form  $ax + by + c = 0$  (2)

Write the values corresponding to  $a, b, c$

**Q24** A point lies on the x-axis at a distance of 7 units from the y-axis. (2)  
What are its coordinates? What will be the coordinates if it lies on y-axis at a distance of -7 units from x-axis?

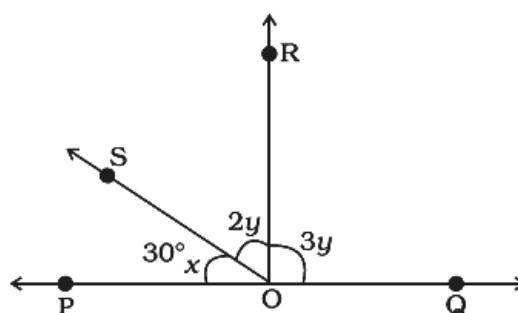
### **SECTION D**

**Q25** Find the value of both the angles which are linear pair. (3)



**OR**

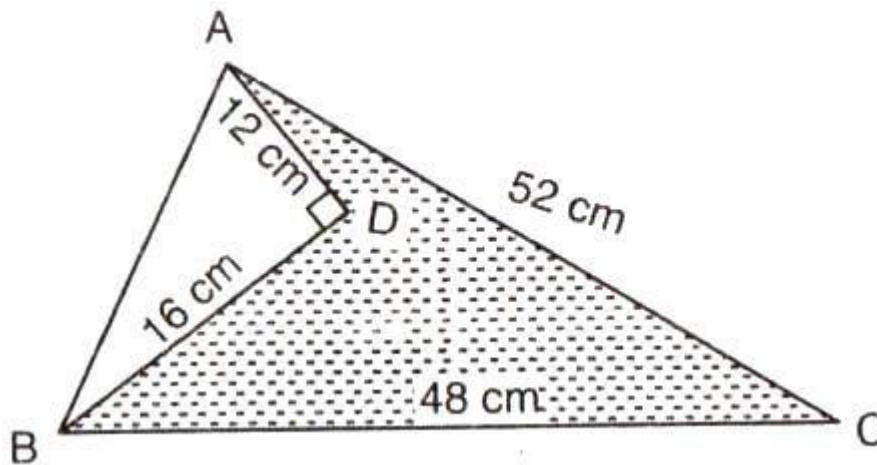
Find the values of  $\angle SOR$  and  $\angle ROQ$  and  $POQ$  forms a straight line. (3)



### SECTION E

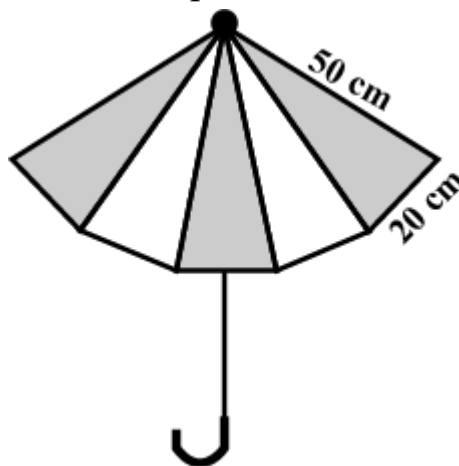
**Q26** Calculate the area of the shaded portion:

(5)



**OR**

An umbrella is made by stitching 10 triangular pieces of cloth of two different colours, each piece measuring 20cm, 50cm and 50cm. How much cloth of each colour is required for the umbrella?



\*\*\*

=====

**BURNPUR RIVERSIDE SCHOOL, BURNPUR**  
**PERIODIC TEST-I : [ 2024-25]**  
**L2 HINDI**  
**CLASS- IX**

Time- 1 ½ Hrs.

Maximum Marks-40

**General Instructions:****सभी प्रश्नों के उत्तर लिखिए -**

प्रश्न-1 क- छोटी बच्ची को बैलों के प्रति प्रेम क्यों उमड़ आया ? 3 X 3 =9

ख- काँजीहौस में कैद पशुओं की हाजिरी क्यों ली जाती होगी ?

ग- अपनी यात्रा के दौरान लेखक को किन कठिनाइयों का सामना करना पड़ा ?

प्रश्न-2 क- कबीर ने सच्चे मित्र की क्या कसौटी बतायी है? 3 X 3 =9

ख- कबीर ने ईश्वर को 'सब स्वाँसो की स्वाँस ' में क्यों कहा है ?

ग- 'वाख ' कविता में कवियत्री द्वारा मुक्ति के लिए किये जाने वाले प्रयास व्यर्थ क्यों हो रहे हैं ?

प्रश्न-3 क-'मृत्यु का दूत' किसे कहा गया है और क्यों ? 4 X 2 =8

ख - अपनी देखी-सुनी किसी आपदा का वर्णन कीजिये ।

प्रश्न- 4 बहुविकल्पीय प्रश्न:- 1 X 4=4

क- 'दो बैलों की कथा ' कहानी के लेखक कौन हैं ?

i कबीर

ii रसखान

iii प्रेमचंद

iv राहुल सांकृत्यायन

ख- मंदिर में हस्त-लिखित कितनी पोथियाँ रखी हुई थी-

i 104

ii 105

iii 103

iv 101

ग-'वाख ' किस भाषा में रचे गए थे-

i कश्मीरी

ii उर्दू

iii हिंदी

iv अवधि

घ- मोती किस खेत में घुस गया था-

i मटर

ii धान

iii गेहूं

iv चना

प्रश्न-5

1×5=5

क- उपसर्ग किसे कहते हैं ?

ख- प्रत्यय किसे कहते हैं ?

ग- 'प्रतिमान' में किस उपसर्ग का प्रयोग हुआ है ?

घ- 'कार' प्रत्यय से दो शब्द बनाइये।

ङ- 'सदाचार' शब्द में कौन सा उपसर्ग है ?

प्रश्न-6

1×5=5

क- समास किसे कहते हैं ?

ख- बहुब्रीहि और कर्मधारय समास में एक अंतर लिखिए।

ग- द्वंद्व समास के दो उदाहरण लिखिए।

घ- 'यथाविधि' शब्द में कौन सा समास है ?

ङ- अर्थ के आधार पर समास के कितने भेद हैं ?

=====

Name \_\_\_\_\_ Sec \_\_\_\_\_ Roll No. \_\_\_\_\_

CODE - B

BURNPUR RIVERSIDE SCHOOL, BURNPUR

PERIODIC TEST-I [2024-2025]

CLASS-IX

TIME-1 ½ Hours.

SUBJECT-HINDI

F.M-40

---

सभी प्रश्नों के उत्तर लिखिए –

प्रश्न 1- क –किन घटनाओं से पता चलता है कि हीरा और मोती में गहरी

दोस्ती थी ?3X3=9

ख –छोटी बच्ची को बैलों के प्रति प्रेम क्यों उमड़ आया ?

ग –अपनी यात्रा के दौरान लेखक को किन कठिनाइयों का सामना करना पड़ा ?

प्रश्न 2- क –कबीर ने ईश्वर-प्राप्ति के लिए किन प्रचलित विश्वासों का खंडन

किया है ?3X3=9

ख –किसी भी व्यक्ति की पहचान उसके कुल से होती है या उसके कर्मों से ?

तर्क सहित उत्तर दीजिए ।

ग –बंद द्वार की साँकल खोलने के लिए ललछद ने क्या उपाय सुझाया है ?

प्रश्न 3- क –‘ मृत्यु का तरल दूत ’ किसे कहा गया है और क्यों ?4X2=8

ख – बाढ़ की खबर सुनकर लोग किस तरह की तैयारी करने लगे ?

प्रश्न 4- बहुविकल्पी प्रश्न – (MCQ)-

4X1=4

1-लेखक ने जानवरों में किसे बुद्धिहीन कहा है ?

क-बैल को    ख-गधे को    ग-बछिया को    घ-मूर्ख को

II-' ल्हासा की ओर ' पाठ की विधा क्या है ?

क -कहानी ख -यात्रा वृत्तांत ग - संस्मरण घ -जीवनी

III-ईश्वर-प्राप्ति का प्रमुख आधार क्या है ?

क -भक्ति ख - धन ग - धर्म घ -ज्ञान

IV-' वाख' किस भाषा में रचे गए थे ?

क -सिंधी ख -हिंदी ग -कश्मीरी घ -ब्रजभाषा

प्रश्न 5- क - उपसर्ग किसे कहते हैं ?1X5=5

ख -'अभिनेता ' शब्द में किस उपसर्ग का प्रयोग हुआ है ?

ग -'परा ' उपसर्ग से दो शब्द बनाइए ।

घ - प्रत्यय किसे कहते हैं ?

ङ -' गरमाहट ' शब्द में कौन-सा प्रत्यय प्रयुक्त है ?

प्रश्न 6- क - समास किसे कहते हैं ?1X5=5

ख -द्विगु समास के दो उदाहरण लिखिए ।

ग -हिंदी भाषा में समास के कितने भेद माने जाते हैं ?

घ -' घुड़सवार ' समस्तपद में समास का नाम लिखो ।

ङ - अव्ययीभाव समास के कोई दो उदाहरण दीजिए ।

=====

**BURNPUR RIVERSIDE SCHOOL, BURNPUR**  
**PERIODICAL EXAMINATION –1 :(2024-2025)**

**BENGALI (L2)**

**CLASS : IX**

**Time: 1<sup>1/2</sup> Hours. Maximum Marks : 40**

সাধারণ নির্দেশিকা :

- এই প্রশ্নপত্রে দুটি **PART** রয়েছে –A, B।
- ক্রম অনুসারে প্রশ্নের পার্শ্ববর্তী নির্দেশ অনুসারে উত্তর লেখো।
- প্রশ্নপত্রটি ৪০ নম্বরের।

**PART – A ( MCQ TYPE )**

1. নীচের অনুচ্ছেদটি পড়ে প্রদত্ত প্রশ্নগুলির সঠিক উত্তর নির্বাচন করে লেখো। 1X4=4
- বৈজ্ঞানিক গবেষণাকে প্রধান দুটি ধারায় ভাগ করা যায়। একটি হল তাত্ত্বিক গবেষণা, যা মুখ্যত গণিতনির্ভর এবং অপরটি হল পরীক্ষানির্ভর অর্থাৎ প্রায়োগিক গবেষণা যা যন্ত্রনির্ভর। স্টিফেন হকিং হলেন প্রথম ধারার বিজ্ঞানী। ১৭৮৫ থেকে ১৭৯০ খ্রিস্টাব্দ এই সময়ে হকিং বিশ্ববিখ্যাত বিজ্ঞানী ও গণিতবিদ রোজার পেনরোজের সঙ্গে সিঙ্গুলারিটি বিষয়ে গবেষণা করতেন। প্রদীপ নিভে যাবার আগে যেমন দপ করে জ্বলে ওঠে, মৃত্যুপথযাত্রী কোনো কোনো বয়স্ক তারা মৃত্যুর আগে তেমনই ঝলসে ওঠে – যাকে বলে সুপারনোভা। এই ঝলসে ওঠার কারণ নক্ষত্রটির বহিরাবরণে বিস্ফোরণ। সুপারনোভার পরে কেন্দ্রের যে অবশিষ্ট অংশটুকু থাকে, তা চুপসে যেতে থাকে। চুপসে যেতে যেতে কখনও ওই অবশিষ্টাংশ একটি বিন্দুতে পরিণত হয়। একেই বলে সিঙ্গুলারিটি।
- ক) বৈজ্ঞানিক গবেষণাকে প্রধানত কয়টি ধারায় ভাগ করা যায়?

i)দুইটি ii)তিনটি iii)চারটি iv)পাঁচটি

খ) ১৭৮৫ থেকে ১৭৯০ খ্রিস্টাব্দ এই সময়ে হকিং বিশ্ববিখ্যাত যে বিজ্ঞানী ও গণিতবিদ সিঙ্গুলারিটি বিষয়ে গবেষণা করছেন তাঁর নাম কী?

i) সুপারনোভা ii) স্টিফেন হকিং iii) সিঙ্গুলারিটি iv) রোজার পেনরোজের

গ) স্টিফেন হকিং কোন ধারার গবেষক?

i)তাত্ত্বিক গবেষক ii)যন্ত্রনির্ভর গবেষক iii)প্রায়োগিক গবেষক  
iv)কোনটিই নয়

ঘ) ‘গবেষণা’ – শব্দের সন্ধি বিচ্ছেদ করো?

i)গোই +এষণা ii)গো + এষণা iii)গব +এষণা iv)গা +এষণা

2. ব্যাকরণ থেকে প্রদত্ত যেকোন দুটি প্রশ্নের সঠিক উত্তর বেছে লেখো।

1X2=2

ক) ব্যর্থ – সন্ধিবিচ্ছেদ করলে কী হবে?

i)ব + অর্থ ii)বি + অর্থ iii)বে + অর্থ iv)বু + অর্থ

খ) কথোপকথন – সন্ধিবিচ্ছেদ করলে কী হবে?

i)কথ + উপকথন ii)কথা + উপকথন iii)কথা + উপকথন iv)কথ +  
উপকথন

গ) স্ব + ইচ্ছা – সন্ধিবদ্ধ করলে কী হবে?

i)স্বেচ্ছা ii)সেচ্ছা iii)স্বইচ্ছা iv)স্বচ্ছা

3. পাঠ্য গদ্য থেকে যেকোন তিনটি প্রশ্নের সঠিক উত্তর নির্বাচন করে লেখো।

1X3=3

ক) ফটিক কলকাতায় যাওয়ার সময় তার ছোট ভাইকে কোন জিনিস দিয়ে  
যায়?

i)ছিপ ii) ঘুড়ি iii)লাটাই iv)সবগুলি

খ) মন্তব্যঃ কলকাতায় মামার বাড়ি যাওয়ার উৎসাহে ফটিকের রাত্রে ঘুম  
হচ্ছিল না।

কারণ (ক) নতুন জায়গায় যাওয়ার উৎসাহেই ফটিকের কিশোরমন

আলোড়িত ছিল।

কারণ (খ) গ্রামের প্রকৃতি, বন্ধুবান্ধব ইত্যাদি ফটিকের আর ভালো লাগছিল



না।

i) কারণ (ক) ঠিক, কিন্তু (খ) ভুল।

ii) কারণ (ক) ভুল, কিন্তু (খ) ঠিক।

iii) কারণ (ক) এবং (খ) দুটোই ঠিক।

iv) কারণ (ক) এবং (খ) দুটোই ভুল।

গ) “ফটিকদাদা, মা ডাকছে”- একথা কে বলেছিল?

i) মাখন ii) বাঘা বাগদি iii) মামার ছেলে iv) বালকদলের একজন

ঘ) পূজার ছুটি কখন?

i) আশ্বিন মাসে ii) কার্তিক মাসে iii) ভাদ্র মাসে iv) পৌষ মাসে

4. সহায়ক পাঠ থেকে প্রদত্ত যেকোন দুটি প্রশ্নের সঠিক উত্তর নির্বাচন করে লেখো। 1X2=2

ক) দুর্গার বয়স কত?

i) নয়-দশ বছর ii) দশ-এগারো বছর iii) এগারো-বারো বছর iv) বারো-তেরো

খ) কে চিংড়ি মাছ ভাজা খেতে ভালবাসে?

i) হরিহর ii) দুর্গা iii) অপু iv) রাণু

গ) দুর্গা অপুকে কেন একটু তেল ও নুন আনতে বলেছিল?

i) পেয়ারা খাবে বলে ii) আমলকী জরাবে বলে iii) আমের কুশি জরাবে বলে iv) কামরাঙা খাবে বলে।

### PART – B ( DESCRIPTIVE TYPE )

5. নীচের যেকোন পাঁচটি প্রশ্নের উত্তর দাও। 1X5=5

ক) রত্নাকর – সন্ধিবিচ্ছেদ করো।

খ) প্রতীক্ষা – সন্ধিবিচ্ছেদ করো।

গ) মহেন্দ্র – সন্ধিবিচ্ছেদ করো।

ঘ) সর্ব + উচ্চ – সন্ধিবদ্ধ করো।

ঙ) রাজা + ঋষি – সন্ধিবদ্ধ করো।

চ) ইতি + আদি – সন্ধিবদ্ধ করো।

6. পাঠ্য গদ্য থেকে যেকোন একটি প্রশ্নের উত্তর দাও। 3X1=3
- ক) “তাহার চেহারা এবং ভাবখানা অনেকটা প্রভুহীন পথের কুকুরের মতো হইয়া যায়”- ‘তাহার’ বলতে কার কথা বলা হয়েছে? তার সম্পর্কে এমন বলার কারণ কী?
- খ) “মাথায় চট করিয়া একটা নতুন ভাবোদয় হয়েছিল”- কার মাথায় নতুন ভাবোদয় হল? তার মাথায় কী নতুন ভাবোদয় হয়েছিল?
7. পাঠ্য গদ্য থেকে যেকোন একটি প্রশ্নের উত্তর দাও। 5X1=5
- ক) “মা এখন আমার ছুটি হয়েছে, এখন আমি বাড়ি যাচ্ছি”- কে, কখন একথা বলেছে? উক্তিটির তাৎপর্য বিশ্লেষণ কর।
- খ) “বিধবা এ প্রস্তাবে সহজেই সম্মত হইলেন”। - কোন প্রস্তাবের কথা এখানে বলা হয়েছে? কেন বিধবা সেই প্রস্তাবে সহজেই সম্মত হয়েছিলেন?
8. পাঠ্য পদ্য থেকে যেকোন একটি প্রশ্নের উত্তর দাও। 5X1=5
- ক) “এই খেয়া চিরদিন চলে নদীপ্রোতে  
কেহ যায় ঘরে, কেহ আসে ঘর হতে”  
প্রসঙ্গসহ তাৎপর্য বিশ্লেষণ কর।
- খ) “সভ্যতার নব নব কত তৃষ্ণা ক্ষুধা –  
উঠে কত হলাহল, উঠে কত সুধা”।  
‘হলাহল’ ও ‘সুধা’ বলতে কী বোঝায়? উক্ত অংশটির মূল বক্তব্য নিজের ভাষায় লেখো।
9. পাঠ্য সহায়ক পাঠ থেকে যেকোন একটি প্রশ্নের উত্তর দাও। 5X1=5
- ক) “ইহার পর হইতেই অসম্ভবের দেশ, অজানার দেশ শুরু হইয়াছে”। বক্তা কে? ‘ইহার পর’ বলতে কী বোঝানো হয়েছে? অপূর কুঠির মাঠ দেখার অভিজ্ঞতা নিজের ভাষায় লেখো।
- খ) “অপমানে দুঃখে সর্বজয়ার চোখে জল আসিল”। সর্বজয়া কে? কখন তার চোখে জল এসেছিল? তার চোখে জল আসার কারণ কী?
10. নীচের যেকোন একটি প্রতিবেদন লেখো। (অনধিক ১৫০ টি শব্দে) 6X1=6
- ক) জলাভূমি ভরাট করে আর একটি আবাসনও নির্মাণ নয় – এ বিষয়ে সংবাদপত্রের জন্য একটি প্রতিবেদন রচনা করো।

খ) একটি কারখানায় গভীর রাতে ভয়াবহ আগুন লাগায়, কয়েকজন শ্রমিকের মৃত্যু হয়েছে – এই বিষয়ে সংবাদপত্রের জন্য একটি প্রতিবেদন রচনা করো।

Name \_\_\_\_\_ Sec \_\_\_\_\_ Roll No. \_\_\_\_\_

CODE – B

# BURNPUR RIVERSIDE SCHOOL, BURNPUR

PERIODIC TEST-1 [2024-2025]

BENGALI  
CLASS – IX

TIME : 1½ Hrs.

Maximum Marks : 40

সাধারণ নির্দেশিকা –

এই প্রশ্নপত্রে দুটি PART রয়েছে A & B

ক্রমানুসারে ও প্রশ্নের পার্শ্ববর্তী নির্দেশ অনুসারে উত্তর লেখো।

## PART – A (MCQ TYPE)

১) নিম্নলিখিত অনুচ্ছেদটি পড়ে সঙ্গে দেওয়া প্রশ্নগুলির সঠিক উত্তরটি নির্বাচন করো– 1×4=4

আলাউদ্দিন খিলজির মতো দুঃসাহসী রাজা ভারতবর্ষে কমই জন্মেছেন। একমাত্র তিনিই চেয়েছিলেন কুতুবের সঙ্গে পাল্লা দিতে। তাই কুতুবের দ্বিগুণ ঘের দিয়ে তিনি আরেকটি মিনার গড়তে আরম্ভ করেন – বাসনা ছিল মিনারটি কুতুবের দ্বিগুণ উঁচু হবে। ইমারত মাত্রেরই একটা অপটিমাম সাইজ আছে – অর্থাৎ যার চেয়ে বড়ো হলে ইমারত খারাপ দেখায়, ছোটো হলেও খারাপ দেখায় (সর্বকলাতেই এ সূত্র প্রযোজ্য, কিন্তু স্থাপত্যের বেলা এটা অন্যতম মূলসূত্র) – কাজেই আলাউদ্দিনের চূড়া ডবল হলে ফল কী ওতরাতো বলা কঠিন। তা সে যা-ই হোক, মিনারের কাঠামোর কিছুটা শেষ হতে না হতেই ওপারের ডাক

খিলজির কানে এসে পৌঁছল, যে পারে খুব সম্ভব মিনার হাতে নিয়ে লাঠালাঠি চলে না।

আপন মহিমায় নিজস্ব ক্ষমতায় যে স্তম্ভ দাঁড়ায় তার নাম মিনার। মসজিদ, সমাধি, কিংবা অন্য কোনো ইমারতের অঙ্গ হিসাবে যে মিনার কখনো থাকে, কখনো থাকে না, তার নাম মিনারেট – মিনারিকা। কুতুবের পর পাঠান মোগল বিস্তারিত মিনারেট গড়েছে, কিন্তু সেগুলোও কুতুবের কাছে আসতে পারে না। তাজের মিনারিকা ভুবনবিখ্যাত, কিন্তু স্পষ্ট দেখতে পাচ্ছি শিল্পী সেখানে নতমস্তকে হার মেনে নিয়ে সেটাকে সাদামাটার চরমে পৌঁছিয়ে খাড়া করেছেন। পাছে লোকে তার মিনারিকার সঙ্গে কুতুবের তুলনা করে লজ্জা দেয় তাই তিনি সেটাকে গড়েছেন এমন ন্যাড়া করে যে দর্শকের মন অজান্তেও যেন কুতুবকে স্মরণ না করে। না হলে যে-তাজের সর্বাঙ্গে গয়নার ছড়াছড়ি তার চারখানা মিনারিকা হস্তে ‘নোয়াটুকু’র চিহ্ন নেই কেন? ওদিকে দেখুন, হুমায়ূনের সমাধি-নির্মাণ ছিলেন আরও ঘোড়েল – তিনি তাঁর ইমারতটি গড়েছেন মিনারিকা সম্পূর্ণ বর্জন করে।

দিল্লি-আগ্রা বহু দূরে, কুতুবের আওতার বাইরে, গুজরাতে রাজধানী আহমদাবাদে আমি একটি মিনারিকা দেখেছি যার সঙ্গে কুতুবের কোনো মিল নেই এবং বোধহয় ঠিক সেই কারণেই তার নিজস্ব মূল্য আছে।

(ক) কার বাসনা ছিল কুতুব মিনারের দ্বিগুন উঁচু একটি মিনার বানানোর?

(অ) হুমায়ূনের

(আ) আলাউদ্দিন খিলজির

(ই) বাবরের

(ঈ) আকবরের

(খ) কীসের একটা অপটিমাম সাইজ আছে?

(অ) কবরের

(আ) বাগানের

(ই) ইমারতের

(ঈ) জলাশয়ের

(গ) কোনগুলো কুতুবের কাছে আসতে পারে না ?

(অ) কুতুবের পর পাঠান মোগলদের নির্মিত মিনারেট

(আ) গুজরাটীদের নির্মিত মিনারেট

(ই) ব্রিটিশদের নির্মিত মিনারেট

(ঈ) রোমানদের নির্মিত মিনারেট

(ঘ) ‘রাজা’ – শব্দটির সমার্থক শব্দ হল –

(অ) প্রজা

(আ) নৃপতি

(ই) আভা

(ঈ) অভিলাষ

২) ব্যাকরণ থেকে প্রদত্ত প্রশ্নগুলির সঠিক বিকল্প উত্তরটি বেছে লেখো (যে কোনো দুটি) :

1×2=2

(ক) ‘সিংহাসন’ শব্দটির সঠিক সন্ধিবিচ্ছেদ কোনটি ?

(অ) সিংহা + আসন

(আ) সিংহো + আসন

(ই) সিংহ + আসন

(ঈ) সিংহ + সন

(খ) ‘হিমাচল’ শব্দটির সঠিক সন্ধিবিচ্ছেদ কোনটি ?

(অ) হিমা + অচল

(আ) হিমা + আচল

(ই) হিম + অচল

(ঈ) হিম + আচল

(গ) প্রতি + ঈক্ষা – সন্ধিবদ্ধ পদটি কী হবে ?

(অ) প্রতিক্ষা

(আ) প্রতিক্ষ

(ই) প্রতীক্ষা

(ঈ) কোনোটিই নয়

৩) সঠিক উত্তরটি নির্বাচন করো (যে কোনো তিনটি) –

1×3=3

(ক) ‘মাতৃভবন ছাড়া আর কোনো অপরিচিত স্থান বালকের পক্ষে .....।’

– শূন্যস্থানে সঠিক শব্দ বসাতো –

(অ) স্বর্গ

(আ) নরক

(ই) দেবালয়

(ঈ) এগুলির কোনোটাই নয়

(খ) ‘আবার তুই মাখনকে মেরেছিস।’ – বক্তা কে ?

(অ) ফটিকের মা

(আ) বিশ্বম্ভরবাবু

(ই) ফটিকের মাসি

(ঈ) ফটিক

(গ) মামার বাড়িতে এসে ফটিকের মায়ের উপর অত্যন্ত অভিমান হয়েছিল কারণ সে খুব অনিচ্ছার সঙ্গে কলকাতায় মামার বাড়িতে এসেছিল।

(অ) মন্তব্য ভুল কারণটি সঠিক

(আ) মন্তব্য ও কারণ দুটোই সঠিক

(ই) মন্তব্যটি সঠিক কারণটি ভুল

(ঈ) মন্তব্য কারণ দুটোই ভুল

(ঘ) ‘দেখ, মার খাবি / এই বেলা ওঠ।’ – কে, কাকে বলেছিল ?

(অ) মাখন ফটিককে

(আ) ফটিক মাখনকে

(ই) বিশ্বম্ভর ফটিককে

(ঈ) ফটিক বিশ্বম্ভরকে

৪) সঠিক উত্তরটি নির্বাচন করো (যে কোনো দুটি) –

1×2=2

(ক) কে যুদ্ধের কথা শুনতে শুনতে তন্দ্রা হয়ে যায় –

(অ) দুর্গা

(আ) অপু

(ই) সর্বজয়া

(ঈ) প্রসন্নগুরুঠাকুর

(খ) হরিহর কোথায় কাজ করে ?

(অ) মুখুজ্জ্যে বাড়ি

(আ) নবীন পালিতের বাড়ি

(ই) রায় বাবুদের বাড়ি

(ঈ) অন্নদা রায়ের বাড়িতে

(গ) জগতের শেষ সীমাটার পর থেকেই কী শুরু হয়েছে বলে বালক অপূর মনে হয়েছে ?

(অ) অচেনার দেশ, অদেখার দেশ

(আ) নতুনতর দেশ, না দেখার কল্পিত দেশ

(ই) অসম্ভবের দেশ, অজানার দেশ

(ঈ) অসম্ভবের রাজ্য, অচেনার গণ্ডী

### **PART – B (DESCRIPTIVE TYPE)**

৫. নিম্নলিখিত প্রশ্নগুলির উত্তর দাও (যে কোনো পাঁচটি) –

1×5=5

(ক) উদাহরণসহ স্বরসন্ধি কাকে বলে লেখো।

(খ) পরম + ঔষধি – সন্ধিবদ্ধ পদটি কী হবে ?

(গ) পিতৃ + আলয় – সন্ধিবদ্ধ পদটি কী হবে ?

(ঘ) ‘প্রত্যুত্তর’ শব্দটির সন্ধি বিচ্ছেদ করো।

(ঙ) ‘নয়ন’ শব্দটির সন্ধি বিচ্ছেদ করো।

(চ) ‘কথোপকথন’ শব্দটির সন্ধি বিচ্ছেদ করো।

৬. যেকোনো একটি প্রশ্নের উত্তর দাও –

3×1=3

(ক) “যদিও ফটিককে বিদায় করিতে তাহার মায়ের আপত্তি ছিল না।” –  
ফটিককে বিদায় করতে তার মায়ের আপত্তি ছিল না কেন ?

অথবা



(খ) “আমি মার কাছে যাচ্ছিলুম, আমাকে ফিরিয়ে এনেছে।” – কেন বক্তা মার কাছে যেতে চেয়েছিল ?

৭. যেকোনো একটি প্রশ্নের উত্তর দাও –

5×1=5

(ক) “মা, আমাকে মারিসনে মা, সত্যি বলছি, আমি কোনো দোষ করিনি।” – কে, কখন কথাগুলো বলেছিল ? এর পরবর্তী ঘটনা নিজের ভাষায় লেখো।

অথবা

(খ) “এইটে ফটিকের সবচেয়ে বাজিত।” – প্রসঙ্গ উল্লেখ করে তাৎপর্য বিশ্লেষণ করো।

৮. যেকোনো একটি প্রশ্নের উত্তর দাও –

5×1=5

(ক) “সকাল হইতে সন্ধ্যা করে আনাগোনা” – কোন্ কবিতার অংশ ? মূল কাব্যগ্রন্থের নাম কী ? কথাটির তাৎপর্য ব্যাখ্যা করো।

অথবা

(খ) “নূতন নূতন কত গড়ে ইতিহাস” – পঙ্ক্তিটি কার লেখা ? কোথায় নতুন ইতিহাস গড়ে ওঠে ? কীভাবে সভ্যতার বুকে নূতন নূতন ইতিহাস গড়ে ওঠে ?

৯. যেকোনো একটি প্রশ্নের উত্তর দাও –

5×1=5

(ক) “ইহাই ছিল তাহার জগতের সীমা” – ‘তাহার’ বলতে কার কথা বলা হয়েছে ? ‘ইহাই’ বলতে কী বোঝানো হয়েছে ? তাহার জগতের সীমাটির বর্ণনা দাও।

অথবা

(খ) “ঠিক সেই সময় মায়ের জন্য তাহার মন বড় কেমন করিয়া উঠিত।” –  
কোন রচনার অংশ ? ‘মায়ের’ এবং ‘তাহার’ বলতে কাদের কথা বলা  
হয়েছে ? কেন তার মন মায়ের জন্য কেমন করে উঠত ?

১০. যেকোনো একটি প্রশ্নের উত্তর দাও –

6×1=6

(ক) বৃত্তিশিক্ষার (Vocational Education) ওপর সরকার বিশেষ জোর  
দিয়েছে – এ বিষয়ে সংবাদপত্রের জন্য একটি প্রতিবেদন রচনা করো।

অথবা

(খ) জলাজমি ও সবুজ ধ্বংসের বিরুদ্ধে জনমত গঠিত হয়েছে – এ বিষয়ে  
সংবাদপত্রের জন্য একটি প্রতিবেদন রচনা করো।

=====



SET - A

BURNPUR RIVERSIDE SCHOOL, BURNPUR

PERIODIC TEST- 1 (2024 - 25)

SECOND LANGUAGE (SANSKRIT)

TIME: 1 ½ Hors

CLASS- IX

FM- 40

सर्वेषाम् प्रश्नानाम् उत्तराणि लिखत

1. अधोलिखितं गद्यांशं पठित्वा प्रश्नान् उत्तरत - 5

मधुर भाषणम् एतादृशः गुणः अस्ति येन मानवः अखिलमपि जगत् वशीकर्तुम् शक्नोति । मधुरभाषिणम् सर्वे प्रेम्णा विश्वासेन च अवलोकयन्ति । मिष्टभाषी सर्वेषु स्निहयति तस्मिन् च सर्वे स्निहयन्ति । वाङ्माधुर्यात् प्रियतरम् वाक्पारुष्यात् च अप्रियतरम् अन्यत् किमपि नास्ति । मधुरभाषणेनैव जनाः कोकिलम् आद्रियन्ते । वाक्पारुष्यात् च काकः दूरीक्रियते । कोकिलस्य काकली मयूरस्य च केकारवः कं मुग्धम् न करोति ?

(I) एकपदेन उत्तरत। (Answer in one word.) 1x2=2

(क) सर्वे प्रेम्णा कम् अवलोकयन्ति ?(ख) जनाः कम् आद्रियन्ते ?

(II) पूर्णवाक्येन उत्तरत। (Answer in a complete sentence.) 1x2=2

(क) कस्मात् काकः दूरीक्रियते ?

(ख) मधुरभाषणेन मानवः किं कर्तुम् शक्नोति ?

(III) भाषिककार्यम्। (Work of language.) 1x1=1

अस्मिन् अनुच्छेदे “प्रियतरम्” इत्यस्य विलोमपदम् किं प्रयुक्तम् ?

(i)अतिप्रियम् (ii)अप्रियतरम् (iii)अप्रियतरम्

2. विद्यालयात् दिनद्वयावकाशार्थम् प्रधानाचार्यम् प्रति मंजूषा सहायतया प्रार्थनापत्रम् लिखत -  $\frac{1}{2} \times 10 = 5$

सेवायाम् ,

श्रीमान् प्रधानाचार्य (i) ----- ।

बी आर एस

(ii) -----

मान्यवरः ,

सविनयम् निवेद्यते यत् (iii) ----- मासस्य पंचमे दिनांके मम भगीन्याः विवाहः (iv)----- संपत्स्यते । विवाहतिथेः एकदिनपूर्वमेव मया तत्र प्राप्तव्यम् । अतः (v)----- अवकाशम् प्रदाय (vi) ----- भवान् इति मदीया (vii)----- ।

दिनांकः -----

(viii)----- शिष्यः

(ix)-----

कक्षा (x)----- ।

मंजूषा - आगामी ,फरीदावादे ,महोदय ,अनुगृहणातु ,कृष्णः ,प्रार्थना ,नवमी ,दिनद्वयस्य ,बर्नपुरम् ,भवदीयः ।

3. छात्र अध्यापकयोः मध्ये वार्तालापम् भवति ,मंजूषायाः योग्यान् शब्दान् नीत्वा रिक्तस्थानानि पूरयन्ताम् ।  $1 \times 5 = 5$

छात्रः - भगवन् ! (i)----- न कृतम् ।

अध्यापकः - (ii)----- त्वया गृहकार्यम् न कृतम् ?

छात्रः - (iii)----- रुग्णा आसीत् ।

अध्यापकः - सा (iv)----- रुग्णा ?त्वया तस्याः सेवा कृता न वा ?

छात्रः- आम् मया (v)----- ।

मंजूषा -( किमर्थम् ,अद्य मया गृहकार्यम् ,तस्याः सेवा कृता ,मम माता ,केन रोगेण । )

4. सन्धिं वा विच्छेदम् कुरुत ।  $1 \times 4 = 4$

(क) महोत्सवः ----- + ----- (ख) सूर्य + अस्तः = -----

(ग) पवनः ----- + ----- (घ) तथैव ----- + -----

5. अधोलिखितानां वर्णानां समुचितं उच्चारणस्थानं लिखत।  $1 \times 3 = 3$

(क) ऋ = ----- (ओष्ठौ, दन्ताः, मूर्धा )

(ख) घ् = ----- (ओष्ठौ, मूर्धा, कण्ठः)

(ग) ज = ----- (तालुः, दन्ताः, कण्ठ)

6. उचित शब्दरूपैः वाक्यानि पूरयत ।  $1 \times 4 = 4$

(क) ----- प्रकाशेन अंधकारः नश्यति ।

(i) भानुम् (ii) भानवे (iii) भानोः

(ख) गुरुः ----- आशीर्वादम् यच्छति ।

(i) छात्राण (ii) छात्रेभ्यः (iii) छात्राः

(ग) या श्रमेण पठति ----- एव साफल्यम् लभते ।

(i) सा (ii) सः (iii) ते

(घ) ----- आज्ञा हि अविचारणीया ।

(i) गुरुणाम् (ii) गुरुम् (iii) गुरुणा

7. उचित धातुरूपैः वाक्यानि पूरयत ।  $1 \times 2 = 2$

(क) सः नायकः ----- ?

(i) आसीत् (ii) सन्ति (iii) भवसि

(ख) बालकाः कोलाहलम् न ----- । (कृ -लोट्)

(i) कुर्वतु (ii) कुरुतु (iii) करोतु

8. एकपदेन उत्तरं लिखत ।

1x4=4

(क) माधवः केन श्राद्धार्थम् निमंत्रितः ? (ख) परम् भूषणम् किम् ?

(ग) सम्पदः कं वृणुते ?

(घ) कः कल्पितमेव जनयति ?

9. पूर्णवाक्येन उत्तरत ।

1x4=4

(क) परमापदाम् पदम् किम् ?

(ख) गौरवम् कथं प्राप्यते ?

(ग) ब्राह्मणेन अविचार्य किं कृतम् ?

(घ) दरिद्रः कः भवति ?

10. स्थूलपदानि अधिकृत्य प्रश्ननिर्माणम् कुरुत।

1x4=4

(क) भामाशाहः धनराशिम् आदाय आगच्छति ।

(ख) सर्वे भटाः देशरक्षायै बद्धपरिकराः आसन् ।

(ग) परतन्त्रे देशे जीवनं नरकायते।

(घ) वीरगत्या मरणमेव कल्याणप्रदम् भवति ।

-----

Name: \_\_\_\_\_ Sec: \_\_\_\_\_ Roll No.: \_\_\_\_\_

CODE: B

BURNPUR RIVERSIDE SCHOOL, BURNPUR

PERIODIC TEST- 1 [2024-2025]

SECOND LANGUAGE (SANSKRIT)

CLASS : IX

Time: 1 ½ Hrs.

Maximum Marks: 40

=====

सर्वेषाम् प्रश्नानाम् उत्तराणि लिखत

1. अधोलिखितम् गद्यांशम् पठित्वा प्रश्नान् उत्तरत। 5

जीवने समयः एव सर्वाधिकः मूल्यवान् अस्ति। व्यतीतस्य समयस्य एकम् अपि क्षणम् केनापि प्रयत्नेन पुनः प्राप्तुं न शक्यते केनापि जनेन। अतः प्रत्येकं क्षणस्य सदुपयोगः सावधानेन मनसा करणीयः सर्वैः जनैः, विशेषतः विद्यार्थिभिः। यथा वयम् अर्जितस्य धनस्य एकैकस्य पणस्य व्ययं सम्यक् विचार्य कुर्मः तथैव एकैकस्य क्षणस्य अपि सदुपयोगः विवेकेन कुर्याम। एकः अपि क्षणः वृथा न यापनीयः। असावधानतया आलस्येन च निरर्थकं नीतः समयः पश्चात्तापस्य असफलतायाः च कारणं भवति। यः मानवः समयस्य महत्त्वम् अवगच्छति, तस्य सदुपयोगं च करोति, सः एव सफलो भवति।

(I) एकपदेन उत्तरत - 1X2=2

(क) मानवः कस्य सदुपयोगं कृत्वा महान् भवति ?

(ख) कस्य सदुपयोगः सावधानेन करणीयः ?

(II) पूर्णवाक्येन उत्तरत - 1X1=1

(क) प्रत्येकं क्षणस्य उपयोगः कथं करणीयः ?

(III) भाषिक कार्यम् - 1X2=2

(क) 'कुर्मः' इति क्रियापदस्य कर्तृपदं किम् ?

(i) वयम् (ii) व्ययम् (iii) सम्यक्

(ख) 'सञ्चितस्य' इति पदस्य पर्यायः किम् ?

(i) पणस्य (ii) अर्जितस्य (iii) क्षणस्य

2. मातुः स्वास्थ्यम् ज्ञातुम् भगिनीं लताम् प्रति पत्रम् लिखत। ½x10=5



(i) -----

शिमलानगरम्

दिनांक: -----

समादरणीये (ii) ----- ।

नमोनमः ।

पत्रेण ज्ञातम् यत् अम्बा (iii) ----- अस्ति। अहम् अतीव (iv) ----- अस्मि परम्  
परीक्षाकारणात् गृहम् (v) ----- सक्षमः न अस्मि। भवती (vi) ----- तस्यै  
(vii) ----- यच्छतु, भगवत्कृपया सा शीघ्रम् (viii) ----- भविष्यति। कृपया  
पत्रोत्तरम् (ix) ----- प्रेषयतु ।

तव भ्राता

(x) -----

मञ्जूषा - { औषधिम्, आगन्तुम्, भगिनी, चिंतितः, यथासमयम्, ज्वरपीडिता,  
छात्रावासतः, स्वस्था, शीघ्रम्, सोमरत्नः }

3. भ्राता-भगिन्योः संवादं प्रदत्तपदैः पूरयत -

1x5=5

भ्राता - भगिनी! किमर्थं (i) ----- भवसि?

भगिनी - भ्रातः! अद्य मम सख्याः (ii) ----- अस्ति।

भ्राता - तव सखी कुत्र (iii) -----?

भगिनी - सा (iv) ----- निवसति।

भ्राता - त्वं कदा प्रत्यागमिष्यसि?

भगिनी - अहं (v) ----- एव प्रत्यागमिष्यमि।

मञ्जूषा - {नववादनपर्यन्तम्, वसति, सज्जा, पटेलनगरे, जन्मदिवसः}

4. अधोलिखितानां वर्णानां समुचितं उच्चारणस्थानं लिखत। 1X3=3

(क) प् = ----- (ओष्ठौ, दन्ताः, कण्ठ)

(ख) घ् = ----- (ओष्ठौ, मूर्धा, कण्ठः)

(ग) ल् = ----- (तालुः, दन्ताः, कण्ठ)

5. सन्धिं वा विच्छेदम् कुरुत ।

1X4=4

(क) महेशः ----- + ----- (ख) प्रत्येकम् ----- + -----

(ग) पावकः ----- + ----- (घ) तथैव ----- + -----

6. उचित शब्दरूपैः वाक्यानि पूरयत ।  $1 \times 4 = 4$

(क) गंगा ----- पवित्रतमा नदी अस्ति ।

(i)नदीः (ii)नदीषु (iii)नदीम्

(ख) अत्र त्रयः ----- सन्ति ।

(i)बालकाः (ii)बालकौ (iii)बालकम्

(ग) द्वे ----- गच्छतः ।

(i)बालकौ (ii)बालिके (iii)बालकः

(घ) ----- फलानि पतन्ति।

(i)वृक्षात् (ii)वृक्षम् (iii)वृक्षस्य

7. उचित धातुरुपैः वाक्यानि पूरयत ।  $\frac{1}{2} \times 4 = 2$

(क) त्वम् कस्यां कक्षायां ----- ?

(i)पठति (ii)पठसि (iii)पठामि

(ख) महात्मा गाँधी देशभक्तः ----- ।

(i)आसीत् (ii)आसीः (iii)आसम्

(ग) सः परिश्रमेण स्वकार्यम् ----- ।

(i)कुर्मः (ii)करोति (iii)कुरुतः

(घ) अहम् भोजनं -----।

(i)पचति (ii)पचामि (iii)पचतः

8. एकपदेन उत्तरं लिखत ।  $1 \times 4 = 4$

(क) उज्जयिन्यां किं नाम विप्रः अवसत्? (ख) कृष्णसर्पः केन दृष्टः ?

(ग) सम्पदः कं वृणुते ? (घ) कः कल्पितमेव जनयति ?

9. पूर्णवाक्येन उत्तरत ।  $1 \times 4 = 4$

(क) कीदृशी भूमिः तोयं ददाति ?

(ख) शोकः किं किं नाशयति ?

(ग) ब्राह्मणेन अविचार्य किं कृतम् ?

(घ) कालः कस्य रसं पिबति ?

10. स्थूलपदानि अधिकृत्य प्रश्ननिर्माणम् कुरुत। 1x4=4

(क) विचारमग्नः महाराणाप्रतापः शिलायाम् उपविष्टः आसीत्।

(ख) सर्वे भटाः देशरक्षायै बद्धपरिकराः आसन् ।

(ग) परतन्त्रे देशे जीवनं नरकायते।

(घ) मथ्यमानात् काष्ठात् अग्निर्जायते।

-----

Name \_\_\_\_\_ Sec \_\_\_\_ Roll No. \_\_\_\_\_  
CODE:A

**BURNPUR RIVERSIDE SCHOOL, BURNPUR**  
**PERIODIC TEST-I [2024-2025]**  
**SCIENCE**  
**CLASS: IX**

Time Allowed:  $1\frac{1}{2}$  Hrs.

Maximum Marks: 40

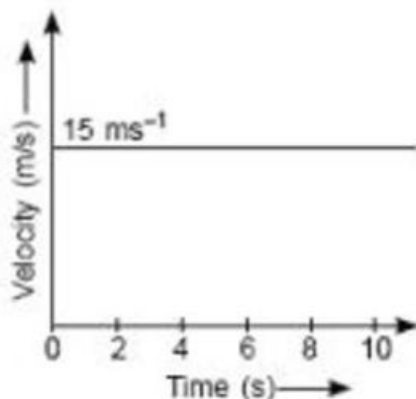
**General Instructions:**

- (i) *This question paper consists of 21 questions in 5 sections.*
- (ii) *All questions are compulsory.*
- (iii) *Section A consists of 12 objective type questions carrying 01 mark each.*
- (iv) *Section B consists of 3 SA-I type questions carrying 02 marks each.*
- (v) *Section C consists of 3 SA-II type questions carrying 03 marks each.*
- (vi) *Section D consists of 2 Case based/Source based units of assessment of 04 marks each with sub parts.*
- (vii) *Section E consists of 1 LA type question of 5 marks.*

**SECTION – A**

Select and write the most appropriate option out of the four options given for each of the questions 1 -12. There is no negative mark for incorrect response.

1. Find the displacement of the body in first 10 seconds in the following graph. 1



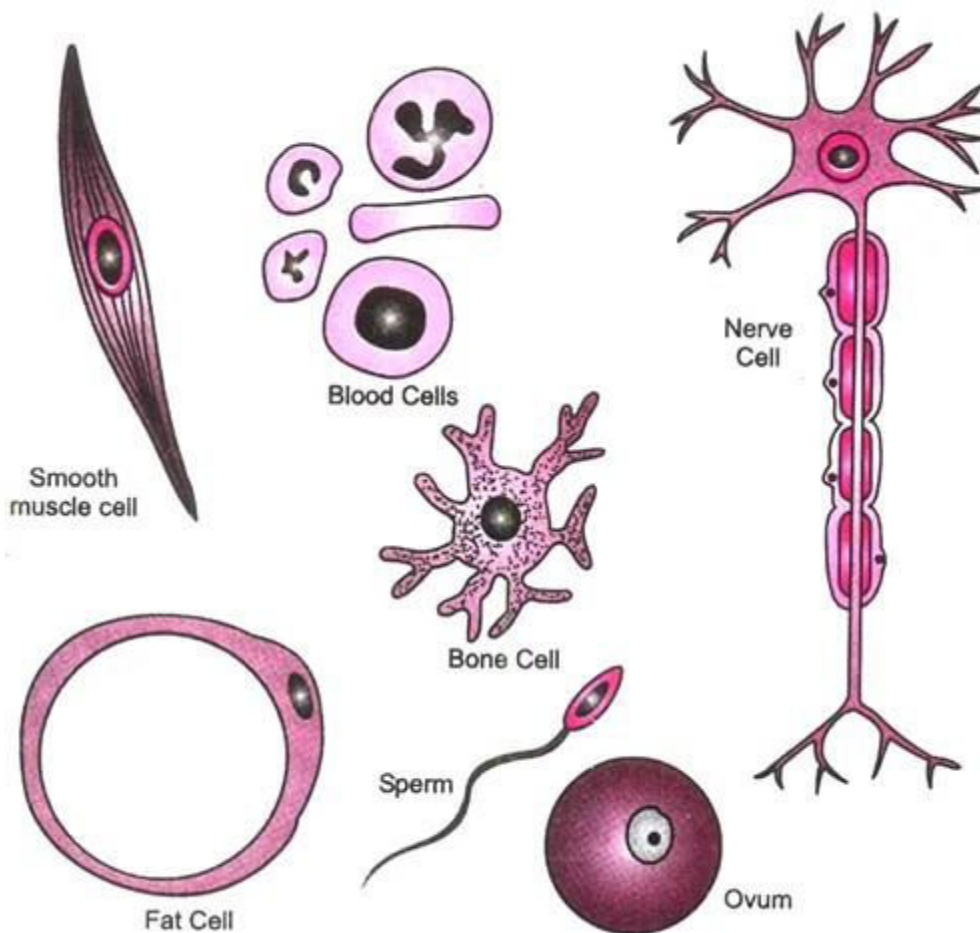
- (a) 15 m  
(b) 150 m  
(c) 1500 m  
(d) 1.5 m
2. According to Newton's second law of motion force is the cause and the outcome is 1
- (a) velocity  
(b) acceleration  
(c) time  
(d) momentum
3. A car travels on a straight road with a velocity of  $25 \text{ kmh}^{-1}$  in first one hour and the next one hour it changes its speed to  $35 \text{ kmh}^{-1}$ . What is the average velocity of the car? 1
- (a)  $5 \text{ kmh}^{-1}$   
(b)  $10 \text{ kmh}^{-1}$   
(c)  $30 \text{ kmh}^{-1}$   
(d)  $60 \text{ kmh}^{-1}$
4. Which of the following state has maximum energy? 1
- (a) Ice  
(b) Water  
(c) Steam  
(d) All have same energy
5. Which of the following is not a compound? 1
- (a) Common salt  
(b) Water  
(c) Iron filings  
(d) Copper sulphate
6. Which of the following statement is not correct? 1
- (a) Steam produces more severe burns on skin than boiling water.  
(b) Water at room temperature is a liquid.  
(c) Ice at 273 K causes less cooling than water at the same

temperature.

- (d) We can sip hot tea from a saucer faster than from a cup.

7.

1

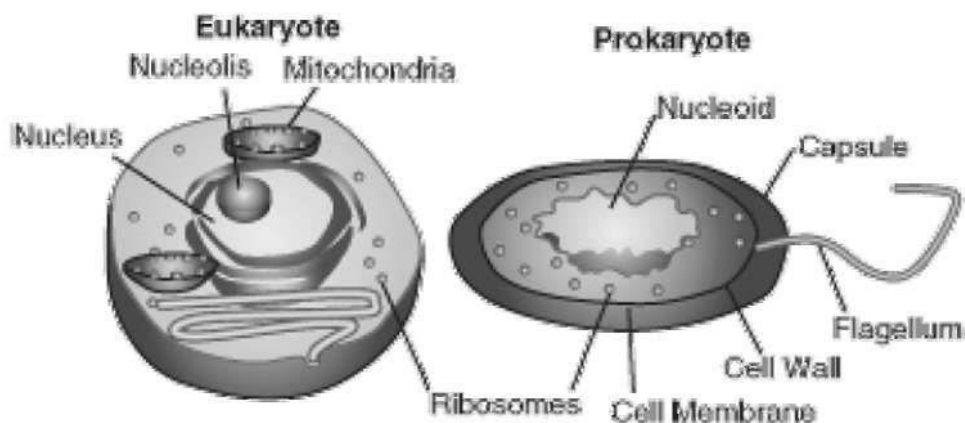


The figure given above depicts some cells from the human body. The shape and size of the cells are related to:

- (a) Size of the organism to which they belong
- (b) The specific function they perform
- (c) Which cell is first formed and which cell is last formed in the body
- (d) (a) and (b)

8.

1



Which is the most appropriate difference between prokaryotes and eukaryotes?

- (a) Many chromosomes in prokaryote but single chromosome in eukaryote
- (b) Size of prokaryote is larger than eukaryote
- (c) Nuclear region is not well defined in prokaryote but well defined and surrounded by a nuclear membrane in eukaryote.
- (d) Membrane bound organelles are present in prokaryote but absent in eukaryote

9. Find out the correct sentence: 1
- (a) Enzymes packed in lysosomes are made by RER
  - (b) RER and SER produce lipid and protein respectively
  - (c) Endoplasmic reticulum is related with the destruction of plasma membrane
  - (d) Plasma membrane is rigid and made up of cellulose

**Question No. 10 to 12 consists of two statements – Assertion (A) and Reason (R). Answer the questions selecting the appropriate options given below:**

- (a) Both A and R are true, and R is the correct explanation of A.
- (b) Both A and R are true, and R is not the correct explanation of A.
- (c) A is true but R is false
- (d) A is false but R is true

10. **Assertion (A):** If the net external force on the body is zero, then its acceleration is zero. 1

**Reason (R):** Acceleration does not depend on force.

11. **Assertion (A):** Mercury, bromine and diamond are elements. 1
- Reason (R):** All these are solids.

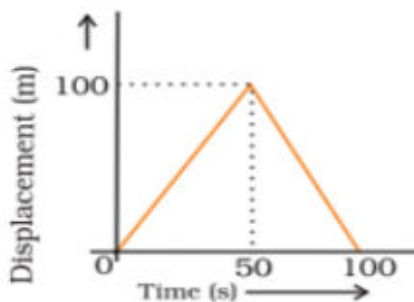
12. **Assertion (A):** Plant cell has a single large vacuole. 1
- Reason (R):** Vacuole is responsible for ingestion of food substance.

## SECTION – B

13. A bullet of mass 10g travelling horizontally with a velocity of  $150 \text{ ms}^{-1}$  strikes a stationary wooden block and comes to rest in 0.03s. Calculate the distance of penetration of the bullet into the block. Also calculate the magnitude of the force exerted by the wooden block on the bullet. 2
14. How will you justify that ice, water and steam are three states of matter and not different substances? 2
15. If anyone is provided with some vegetables to cook, he or she generally adds salt to the vegetables. After adding salt, vegetables release water. Why? 2

## SECTION – C

16. (a) A car starts from rest and moves along the X-axis with constant acceleration of  $5 \text{ ms}^{-2}$  for 8 seconds. It then continues with constant velocity. What distance will the car cover in 12 seconds since it started from rest? 3
- (b) A girl walks along a straight path to drop a letter in the letter box and comes back to her initial position. Her displacement-time graph is shown in figure. Plot a velocity-time graph for the same.



17. Define the following: - 3
- i) Boiling point
  - ii) Evaporation
  - iii) Latent heat of vaporization
18. Differentiate between Mitosis and Meiosis. (Give three points) 3



## **SECTION – D**

The following questions are Source based/Case based questions. Read the case/source carefully and answer the questions that follow.

19. **Read the passage given below and answer the following** 4

**questions: -**

The force acting on a body is capable of bringing changes in its motion. Newton's three laws of motion are a consequence of this effect of force. While Newton's first law of motion is called the law of inertia, second law is called the real law of motion but the third law which enables our movement on earth.

- (a) State Newton's third law of motion.
- (b) Three blocks of same size and shape are made of steel, wood and rubber. Which of them has the highest inertia and why?
- (c) Define one Newton force.

**OR**

- (c) Define inertia

20. **Read the passage given below and answer the following** 4

**questions: -**

A pure substance consists of a single type of particles and a mixture contains more than one kind of pure substance. Mixtures may be homogeneous or heterogeneous. A solution is a homogeneous mixture of two or more substances. Its composition may be expressed as mass percent or volume percent. A colloidal solution is also a solution in which the size of particles is intermediate between true solution and suspension.

- (a) Give one example of a solid solution.
- (b) Name the dispersed phase and dispersion medium in jelly.
- (c) A given solution contains 40g of sugar in 320g of water. Calculate the concentration of the solution.

**OR**

- (c) Compare suspension and colloidal solution on the basis of a) particle size and b) stability.

## **SECTION – E**

21. (a) Name the organelles in the cell which have special names 5  
according to their functions in the cell.
- (i) Powerhouses of the cell
  - (ii) Suicide bags of the cell
- (b) Discuss the functions of Golgi Apparatus.(Give three points)

=====



Name \_\_\_\_\_ Sec \_\_\_\_\_ Roll No. \_\_\_\_\_

CODE : B

BURNPUR RIVERSIDE SCHOOL, BURNPUR

PERIODIC TEST 1 : [2024 – 2025]

SCIENCE

CLASS : IX

Time Allowed:  $1\frac{1}{2}$  Hours

Maximum Marks: 40

=====

**General instructions:**

*(i) This question paper consists of 21 questions in 5 sections.*

*(ii) Section A consists of 12 objective type questions carrying 1 mark each.*

*(iii) Section B consists of 03 SAI type questions carrying 2 marks each.*

*(iv) Section C consists of 03 SAI type questions carrying 3 marks each.*

*(v) Section D consists of 02 case based/ source based units of assessment of 4 marks, each with sub parts.*

*(vi) Section E consists of 01 LA type question carrying 5 marks.*

=====

=====

**SECTION - A**

**Select and write one most appropriate option out of the four options given for each of the questions 1 – 12.**

1. The numerical ratio of displacement to distance for a moving object is : 1
- a) Always less than 1
  - b) Always equal to 1
  - c) Always greater than 1
  - d) Equal to or less than 1
2. A body of mass 2 kg is moving on a smooth floor on a straight line with a uniform velocity of 10m/s. Resultant force acting on the body is: 1
- a) 20N
  - b) 10N
  - c) 2N
  - d) Zero

3. Tripling the speed of a motor car multiplied the distance needed for stopping it by: 1
- a) 3
  - b) 6
  - c) 9
  - d) 12
4. Which of the following represent the suitable conditions for the liquefaction of gases? 1
- a) Low temperature, low pressure
  - b) High temperature, low pressure
  - c) Low temperature, high pressure
  - d) High temperature, high pressure
5. Which one of the following is most likely to exhibit Tyndall effect? 1
- a) Sugar and water mixture
  - b) Potash alum water mixture
  - c) Chalk powder and water mixture
  - d) Potassium
6. If the temperature of an object is 268K, it will be equivalent to 1
- a)  $-5^{\circ}\text{C}$
  - b)  $+5^{\circ}\text{C}$
  - c)  $368^{\circ}\text{C}$
  - d)  $-25^{\circ}\text{C}$
7. Which one is the energy currency in living organisms? 1
- a) Glucose
  - b) Pyruvate
  - c) ATP
  - d) ADP

8. Chromosomes are made up of 1  
a) DNA  
b) Protein  
c) DNA and protein  
d) RNA
9. Identify the organelle present only in animal cell 1  
a) Chloroplast  
b) Nucleus  
c) Centriole  
d) Vacuole

**Question no. 10 -12 consists of two statements – Assertion (A) and Reason (R). Answer these questions selecting the appropriate option given below.**

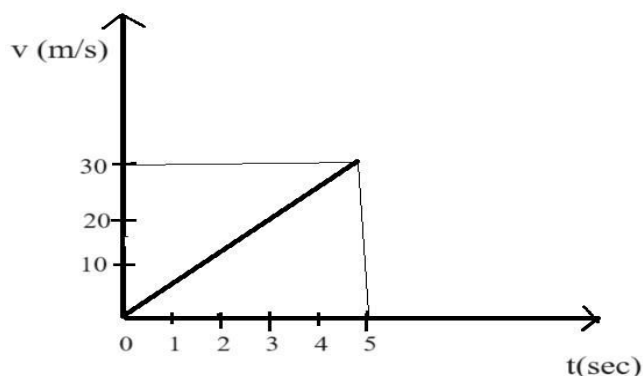
- (a) Both A and R is true and R is the correct explanation of A.  
(b) Both A and R is true but R is not the correct explanation of A.  
(c) A is true and R is false.  
(d) A is false and R is true.

10. **Assertion (A):** A cloth covers a table. Some dishes are kept on it. 1  
The cloth can be pulled out without dislodging the dishes from the table.  
**Reason (R):** For every action there is an equal and opposite reaction.
11. **Assertion (A):** A solution of table salt in a glass of water is 1  
homogeneous.  
**Reason (R):** A solution having different composition throughout is homogeneous.
12. **Assertion (A):** When plant cells are kept in a hypertonic solution, the 1  
protoplast of the cell shrinks.  
**Reason (R):** Plant cells kept in a hypertonic solution promote exosmosis, due to which water of cytoplasm comes out through plasma membrane.

### SECTION – B

Question no. 13 – 15 are Short answer I type questions.

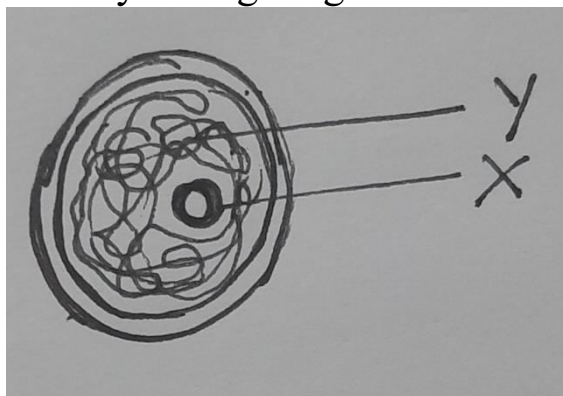
13. 2



The velocity versus time graph of a ball moving on the surface of a floor is shown in figure. If mass of the ball is 25g, calculate the force acting on the ball.

14. a) Define Latent heat of fusion. 2  
b) Which of the following two diffuses slower:  
Bromine vapour into air or Copper sulphate into water?

15. a) Identify the figure given below. 2



b) Label X and Y.

### SECTION –C

Question no. 16 – 18 are Short answer II type questions.

16. A car starts from rest and moves along the X axis with a constant 3  
acceleration of  $5\text{m/s}^2$  for 8 second. If it then continues with constant  
velocity, what distance will the car cover in 12 second since it started  
from rest?

17. a) State any two factors which affect the rate of evaporation. 3  
b) Why does our palm feel cold when we put some acetone on it?
18. Differentiate between prokaryotic cells and eukaryotic cells. 3

### **SECTION – D**

**Question no. 19 – 20 are case based / source based questions with 3 sub parts. Internal choice is provided in one of these sub parts.**

19. Vijay sat on the front seat of his car which was driven by his father. 4  
Vijay did not want to wear the seat belt. His father asked him to wear seat belt as it was necessary in case of emergency. He explained him the reason and Vijay got convinced.
- a) Why it is advisable to wear a seat belt while driving a car?
  - b) Name the physical quantity that measures the inertia of a body.
  - c) A man falling on a cemented floor receives more injuries than a man falling on a sandy floor. Why?

**OR**

c) A hammer of mass 500g moving at 50m/s strikes a nail. The nail stops the hammer in a very small time of 0.01sec. What is the force of the nail on the hammer?

20. The particles of a colloid are uniformly spread throughout the 4  
solution. Due to the relatively smaller size of particles, as compared to that of a suspension, the mixture appears to be homogeneous. But actually, a colloidal solution is a heterogeneous mixture.
- a) Give one example of Emulsion.
  - b) State any one difference between colloidal solution and suspension.
  - c) What is Tyndall effect?

**OR**

- c) What is Aerosol?



## **SECTION – E**

**Question no. 21 is Long answer type question.**

21. Draw a well labeled diagram of animal cell and mention one function of any two main cell organelles. 5

=====

Name \_\_\_\_\_ Sec \_\_\_\_\_ Roll No. \_\_\_\_\_

CODE: A

**BURNPUR RIVERSIDE SCHOOL, BURNPUR**  
**PERIODIC TEST -1 [2024-2025]**  
**SOCIAL SCIENCE**

Time:1 ½ Hours

CLASS-IX

Maximum Marks :40

**GENERAL INSTRUCTIONS:**

- 1 There are 26 questions in all . Attempt all the questions
  - 2 All questions are compulsory
- =====

Q1 Arrange the following in the correct sequence :- 1

- i) Napoleon – King of France
- ii)The Directory Rule in France
- iii)Attack on the Bastille
- iv)Louis XVI – King of France

- a) iii iv i ii
- b) ii i iii iv
- c) i ii iv iii
- d) iv iii ii i

Q2 Which of the following statement is correct ? 1

- a) India is the largest democracy in the world .
- b) No democracy has ever gone to war with another democracy .
- c) A candidate in China needs the approval of the Chinese army to contest elections .
- d) Democracy increases the speed of decision making .

- Q3. The meaning of 'democracy' is that : 1
- a) The rulers are elected by the people
  - b) Rulers are not elected by the people
  - c) Rulers are nominated by the people
  - d) None of these
- Q4. Identify the state of India through which the Tropic of Cancer passes 1
- a) Tamil Nadu
  - b) Madhya Pradesh
  - c) Uttar Pradesh
  - d) Kerala
- Q5 The Northern part of the western coast is called the 1
- a) Konkan
  - b) Kannad plain
  - c) Malabar coast
  - d) Northern Circar
- Q6. **Assertion (A)** -Though there are a variety of non farm activities in Palampur, only a few people are involved in it. 1  
**Reason (R)** -Loan facilities and markets to sell nonfarm products are not well developed in Palampur
- a Both Assertion (A) and Reason(R) are true and Reason(R) is the correct explanation of Assertion (A).
  - b Both Assertion (A) and Reason(R) are true but Reason(R) is not the correct explanation of Assertion (A).
  - c Assertion (A) is true but Reason (R) is false.
  - d Assertion (A) is false but Reason(R) is true.

Q7. \_\_\_\_\_ is the main drawback of the farming methods used in Palampur. 1

- a) High dependency on rainfall
- b) Lack of access to modern technology
- c) Level of availability of seeds
- d) Lack of awareness about agricultural practices

Q8. Match the following and choose the correct option. 1

C-A	C-B
A . Purvanchal range	i. Pir Panjal ,Dhaura Dhar ranges
B. Himachal Himalaya	ii. Terai, Bhabar, Khadar
C .Northern Plain	iii.Bundelkhand, Baghelkhand, Chotanagpur plateau
D. The Peninsular plateau	iv.Naga, Manipur, Mizo hills

- a) A-i, B-ii, C-iv , D-iii
- b) A-ii, B-iv, C-i, D-iii
- c) A-iv, B-i, C-ii, D-iii
- d) A-iii, B-iv, C-ii, D-i

Q9. The Palk Strait lies between India and \_\_\_\_\_. 1

- a) Sri Lanka
- b) Maldives
- c) Bangladesh
- d) Myanmar

Q10. In China , before contesting elections , a candidate needs the approval ----- 1

- a) of the army
- b) of the Chinese Communist Party
- c) of the people
- d) of the government

Q11. 'One person , one vote' means 1

- a) One person is to be voted by all
- b) A person can contest election
- c) Each adult citizen must have one vote and each vote must have one value.
- d) None of these

Q12. What did the image below convey to the people of France who could not read and write ? 1



- a) Becoming free
- b) Law is same for all
- c) Unity
- d) Personification of the law

Q13. Fixed capital of a dairy farmer is 1

- a) Buffaloes and cows
- b) Milk chilling machine
- c) Tempo to transport milk
- d) All of the above

- Q14. The highest peak in the Eastern Ghats 1
- a) Anaimudi
  - b) Kanchenjunga
  - c) Mahendragiri
  - d) Khasi
- Q15. The eastern most longitude of India 1
- a)  $97^{\circ}25'$
  - b)  $82^{\circ}30'$
  - c)  $68^{\circ}7'$
  - d)  $77^{\circ}6'$
- Q16. Which of the following has reduced India's distance from Europe by 7000km 1
- a) Panama Canal
  - b) Indira Gandhi Canal
  - c) Buckingham Canal
  - d) Suez Canal
- Q17. Democracy enhances the dignity of the \_\_\_\_\_ 1
- a) citizens
  - b) nations
  - c) ministers
  - d) None of these
- Q18. Democracy improves the quality of decision – making because: 1
- a) decisions are taken by educated people
  - b) decisions are taken by consultation and discussions
  - c) decisions are taken by the judiciary
  - d) decisions are taken very swiftly

- Q19. One of the appropriate reason that the government in China is not democratic is :- 1
- a) A candidate needs the approval of the Chinese army to contest elections.
  - b) People are not involved in elections .
  - c) Elections are held under Communist Party's approval.
  - d) None of these
- Q20. Name the tax levied by the Church on the third estate . 1
- a) Taille
  - b) Tithes
  - c) Indirect Tax
  - d) None of the above
- Q21 What were the causes of the empty treasury of France under LouisXVI ? 3
- Q22. Write any 3 arguments in favour of democracy . 3
- Q23. Explain the parallel division of Himalaya. 3
- Q24. How was multicropping practiced in Palampur? Explain 3
- Q25. Read the extract given below and answer the following questions. 1X4  
=4
- In France the Monarch did not have the power to impose taxes according to his will alone . Rather he had to call a meeting of the Estates General which would then pass his proposal for new taxes. Estate General was a political body to which the three estates sent their representatives. On5<sup>th</sup>May 1789 Louis XVI called together an assembly of the Estate General to pass a proposal for new taxes. The first and second estates sent 300 representatives each , who were seated in rows facing each other on two sides, where as 600 members of the third estate had to stand at the back. Peasants ,

artisans and women were denied entry to the assembly .

- i. What is an Estate General ?
  - a) The Highest Court
  - b) A Political Party
  - c) A Political Body
  - d) A school
  
- ii. When did Louis XVI called an assembly of the Estate General?
  - a) 4<sup>th</sup>April , 1789
  - b) 22<sup>nd</sup>May , 1789
  - c) 15<sup>th</sup>May , 1789
  - d) 5<sup>th</sup>May , 1789
  
- iii. How many representatives did the third estate sent to the Estate General?
  - a) 350
  - b) 600
  - c) 500
  - d) 100
  
- iv. Who were denied entry to the assembly ?
  - a) The peasants , artisans and women
  - b) The merchants
  - c) The judges
  - d) The Monarch



Q26. Read the extract given below and answer the following questions.

1X  
4=4

Palampur is well-connected with neighboring villages and towns. Raiganj, a big village, is 3 kms from Palampur. An all weather road connects the village to Raiganj and further on to the nearest small town of Shahpur. Many kinds of transport are visible on this road starting from bullock carts, tongas, bogeys (wooden cart drawn by buffalos) loaded with jaggery (gur) and other commodities to motor vehicles like motorcycles, jeeps, tractors and trucks.

This village has about 450 families belonging to several different castes. The 80 upper caste families own the majority of land in the village. Their houses, some of them quite large, are made of brick with cement plastering. The SCs (dalits) comprise one third of the population and live in one corner of the village and in much smaller houses some of which are of mud and straw. Most of the houses have electric connections. Electricity powers all the tubewells in the fields and is used in various types of small business. Palampur has two primary schools and one high school. There is a primary health centre run by the government and one private dispensary where the sick are treated. In villages across India, farming is the main production activity. The other production activities, referred to as nonfarm activities include small manufacturing, transport, shop-keeping, etc.

A. Raiganj, a big village, is \_\_\_\_\_ km. from Palampur

- a) 5
- b) 4
- c) 3
- d) 1

B. Which of the following statement is true with respect to Palampur:

- a) Palampur has one primary school and two high schools
- b) Palampur has two primary schools and one high school
- c) Dairy is the main production activity
- d) The Village has about 600 families belonging to several different centers

C. Raw materials and money in hand are called

- a) Working capital
- b) Fixed capital
- c) Human capital
- d) None of the above

D. The variety of inputs required at every stage during production is known as -----

- a) Physical capital
- b) Labour
- c) Human capital
- d) None of the above

=====



Name \_\_\_\_\_ Sec \_\_\_\_\_ Roll No. \_\_\_\_\_  
CODE:B

**BURNPUR RIVERSIDE SCHOOL, BURNPUR**  
**PERIODIC TEST-1 [2024-25]**  
**SOCIAL SCIENCE**  
**CLASS IX**

**Time: 1½ Hours**

**Maximum Marks:40**

**General Instructions:**

- i) **There are 26 Questions in all. Attempt all questions.**  
ii) **All questions are compulsory.**

1. **Which list of French leaders is in the correct chronological order?** 1
- A. Louis XVI, Napoleon, Robespierre  
B. Robespierre, Napoleon, Louis XVI  
C. Louis XVI, Robespierre, Napoleon  
D. Napoleon, Louis XVI, Robespierre
2. **He overthrew a democratically elected government and declared himself the '*Chief Executive*' of the country. Later he changed his designation to President in 2002. Which President of Pakistan was this?** 1
- A. General Pervez Musharraf  
B. Muhammad Zia-ul-Haq  
C. Farooq Leghari  
D. Muhammad Mian Soomro
3. **The principle of democracy is applicable to \_\_\_\_\_.** 1
- A. political rights only  
B. only for Right to life  
C. only for Right to Speech  
D. any sphere of life.

4. **Identify the longitude by choosing the correct option by reading the given clues.** 1

- i) It passes through Mirzapur
- ii) Its longitudinal value is  $82^{\circ} 30' E$
- iii) It passes almost through the centre of our country.

**OPTIONS**

- A. Tropic of Cancer
- B. Greenwich Meridian
- C. Prime Meridian of India
- D. Standard Meridian of India

5. **Choose the correct statement** 1

- A. The folds of the Great Himalayas are symmetrical in nature.
- B. The altitude of Himadri varies between 3,700 and 4,500 metre.
- C. The altitude of Shiwalik varies between 900 and 1100 metres.
- D. The longitudinal valley lying between Inner Himalaya and Lesser Himalaya are known as Duns.

6. **In the given question, there are two statements marked as Assertion (A) and Reason(R). Read the statements and choose the correct code:** 1

**Assertion (A):** Most farm labourers do not get the minimum wages set by the government in Palampur.

**Reason (R):** Farm labourers are ready to work even on low wages realizing the heavy competition for employment among them.

- A. Both A and R are true and R is the correct explanation of A.
- B. Both A and R are true but R is not the correct explanation of A.
- C. A is true but R is false.
- D. A is false but R is true.

7. **Choose the appropriate option to fill in the blank:** 1

The aim of \_\_\_\_\_ is to produce goods and services that we want.

- A. Production
- B. Cultivation
- C. Education
- D. Modern Farming

8. **Choose the correct option by matching column I and Column II** 1

Column I	Column II
I. Eastern Ghats	1. Submarine Mountain
II. Western Ghats	2. Coral Island
III. Lakshadweep	3. Anaimudi
IV. Andaman and Nicobar	4. Mahendragiri

**OPTIONS**

- A. I-4, II-3, III-2, IV-1
- B. I-3, II-4, III-1, IV-2
- C. I-4, II-1, III-3, IV-2
- D. I-4, II-2, III-1, IV-3

9. **Which canal has reduced the distance between India and Europe by 7000 km?** 1

- A. Panama Canal
- B. Suez Canal
- C. Red Sea
- D. Mediterranean Sea

10. **Select the correct option based on the following statements:**

1

**Statement 1:** In a democratic state arrangement, equal rights and justice is granted to all.

**Statement 2:** In a democracy, people elect their representatives in the government.

- A. Both statements are true
- B. Both statements are false
- C. Statement 1 is true but Statement 2 is false
- D. Statement 2 is true but Statement 1 is false

11. **Who wrote the pamphlet called ‘What is the Third Estate’?**

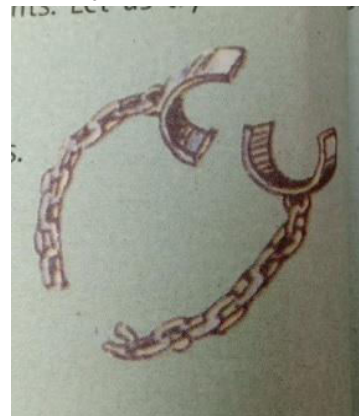
1

- A. Mirabeau, a nobleman
- B. Abbe Sieyes
- C. Rousseau, a philosopher
- D. Montesquieu

12. ***Le Barbier*- a famous painter used many images to communicate important ideas as part of the content of the Declaration of Rights during the 18<sup>th</sup> century.**

**The picture given below is a ‘broken chain.’ What does it stand for?**

- A. It symbolizes captivity.
- B. It symbolizes the act of becoming free.
- C. It symbolizes equality.
- D. It symbolizes royal power.



- 13. What is the main idea behind Green Revolution techniques introduced in Palampur? 1**
- A. Using environment friendly farming methods.
  - B. Planting more trees
  - C. Increasing agricultural production through modern techniques.
  - D. Promoting traditional farming practices
- 14. What are the three sections of western coast? 1**
- A. Northern Circar, Coromandel Coast, Northern Circars
  - B. Konkan Coast, Kannad plain, Malabar coast
  - C. Konkan Coast, Kannad Plain, Malabar Coast
  - D. Coromandel Coast, Konkan coast, Kannad Plain
- 15. Which Islands are situated to the south of the Lakshadweep Islands? 1**
- A. Sri Lanka
  - B. Maldives
  - C. Andaman
  - D. Nicobar
- 16. The latitudinal and longitudinal extent of India's mainland is about \_\_\_\_\_ degrees. 1**
- A. 20
  - B. 30
  - C. 15
  - D. 25
- 17. Which party always won the elections in Mexico since its independence in 1930 until 2000? 1**
- A. Revolutionary Party
  - B. Mexican Revolutionary Party
  - C. Institutional Revolutionary Party
  - D. Institutional Party



18. **Why can not the Chinese government be called a democratic government even though elections are held there?** 1
- A. Army participates in election  
B. Government is not accountable to the people  
C. Some parts of China are not represented at all  
D. Government is always formed by the Communist Party
19. **‘One person, one vote’ means.....** 1
- A. One person is to be voted by all  
B. One person has one vote and each vote has one value  
C. A person can vote only once in his life  
D. Both A and C
20. **Division of power within the government was put forth in \_\_\_\_\_ .** 1
- A. *Two Treaties of Government*  
B. *The Spirit of the Laws*  
C. *Le Moniteur Universal*  
D. *The Social Contract*
21. **What was the condition of women in France before the French Revolution?** 3
22. **“Democracy is better than other forms of government because it allows us to correct its own mistakes.” Explain.** 3
23. **Explain how the Northern plain is divided according to the variation in its relief feature.** 3
24. **How did the spread of electricity help farmers in Palampur?** 3
25. **Read the given passage and answer the questions that follow:**  
The period from 1793 to 1794 is referred to as the Reign of Terror. Robespierre followed a policy of severe control and punishment. All those whom he saw as being ‘enemies’ of the republic – ex-nobles and clergy, members of other political

parties, even members of his own party who did not agree with his methods – were arrested, imprisoned and then tried by a revolutionary tribunal. If the court found them ‘guilty’ they were guillotined. The guillotine is a device consisting of two poles and a blade with which a person is beheaded. It was named after Dr Guillotin who invented it.

**(25.1)Who was Robespierre?** **1**

- A. a French artist
- B. a revolutionary
- C. a Jacobin leader
- D. a philosopher

**(25.2)Who invented the device named guillotine?** **1**

- A. Dr. Guillotin
- B. Robespierre
- C. Louis XVI
- D. Olympe De Gouges

**(25.3)In the Old Regime of France, nobles and clergy comprised the \_\_\_\_\_.** **1**

- A. 1<sup>st</sup> Estate
- B. 2<sup>nd</sup> Estate
- C. 3<sup>rd</sup> Estate
- D. Both A and B

**(25.4)How did Robespierre meet his end?** **1**

- A. He died at the Battle of Waterloo
- B. He died a natural death
- C. He was sent to the guillotine
- D. He was killed by Louis XVI

**26. Read the given passage and answer the questions that follow:**

In Palampur, about one third of the 450 families are landless, i.e., 150 families, most of them dalits, have no land for cultivation. In 1960, Gobind was a farmer with 2.25 hectares of largely unirrigated land. With the help of his three sons Gobind cultivated the land. Though they didn't live very comfortably, the family managed to feed itself with a little bit of extra income from one

buffalo that the family possessed. Some years after Gobind's death, this land was divided among his three sons. Each one now has a plot of land that is only 0.75 hectare in size. Even with improved irrigation and modern farming method, Gobind's sons are not able to make a living from their land. They have to look for additional work during part of the year.

**(26.1)How many total families reside in Palampur? 1**

- A. 150
- B. 200
- C. 350
- D. 450

**(26.2)Why do some families of farmers cultivate such small plots of land? 1**

- A. Most farmers do not know how to cultivate big acres of land.
- B. Green Revolution works better in small acres of land only
- C. There is unequal distribution of land amongst farmers in Palampur
- D. All of the above

**(26.3)\_\_\_\_\_ is measured as the crop produced on a given piece of land during a single season. 1**

- A. guintha
- B. bigha
- C. yield
- D. Both A and C

**(26.4)All farmers in Palampur grow at least two main crops; many are growing \_\_\_\_\_ as the third crop in the past fifteen to twenty years. 1**

- A. Potato
- B. Brinjal
- C. Onion
- D. Cucumber

\*\*\*\*\*

Name \_\_\_\_\_ Sec \_\_\_\_ Roll No. \_\_\_\_

CODE:A

**BURNPUR RIVERSIDE SCHOOL, BURNPUR**  
**PERIODIC TEST-I [2024-2025]**  
**INFORMATION TECHNOLOGY**  
**CLASS-IX**

**Time: 1 ½ Hrs.**

**Maximum Marks:40**

---

---

**General Instructions:**

1. Please read the instructions carefully.
  2. This Question Paper consists of **11 questions** in two sections: Section A & Section B.
  3. Section A has Objective type questions whereas Section B contains Subjective type questions.
  4. **All questions are compulsory.**
  5. All questions of a particular section must be attempted in the correct order.
  6. **SECTION A-OBJECTIVE TYPE QUESTIONS (18MARKS):**
    - i. This section has 02 questions.
    - ii. Marks allotted are mentioned against each question/part.
    - iii. There is no negative marking.
    - iv. Do as per the instructions given.
  7. **SECTION B –SUBJECTIVE TYPE QUESTIONS (22MARKS):**
    - i. This section has 09 questions.
    - ii. Do as per the instructions given.
    - iii. Marks allotted are mentioned against each question/part.
- 
-

## **SECTION A: OBJECTIVE TYPE QUESTIONS**

1.

**Answer the following 9 questions on  
Employability Skills(1 x9= 9marks)**

- i. Which of the following is an example of non- verbal communication  
a.Facial Expression                      b.Appearance  
c.Posture                                      d. All of the above
- ii. Raman shouted “Hurray!!” suddenly when his friend won the match. Which part of speech expresses the above feelings.  
a.Preposition                      b.Noun  
c.Conjunction                      d.Interjection
- iii. Kunal saw the green light signal before crossing the road. What kind of communication is that?  
a.Written                      b.Visual                      c.Verbal                      d.none
- iv. \_\_\_\_\_ Communication uses spoken words to communicate a message.  
a.Written                      b.Visual                      c.Verbal                      d.none
- v. “Do you have any idea about the game?”- What kind of sentence is it?  
a.Declarative                      b.Interrogative  
c.Imperative                      d.Exclamatory
- vi. Kavita is very impulsive during her competition. This is her \_\_\_\_\_.  
a.Strength                      b.Weakness                      c.Confidence                      d.none
- vii. \_\_\_\_\_ is the inner force that drives you to do things.  
a.Postive thinking                      b.Problem Solving  
c.Self- Motivation                      d.Self-Control.
- viii. \_\_\_\_\_ is the working together with people to achieve common goal.  
a.Goal Setting                      b.Team Work  
c.Grooming                      d.Postive Thinking
- ix. Lisa completes her work in a timely manner. What kind of self-management skill she exhibits?  
a.Time-management                      b.Self-Control  
c.Self-Confidence                      d.Self-Awareness

2.

**Answer the following 9 questions  
(1 x9= 9marks)**

- i. Gourav wants to invite 200 friends for his wedding reception. He has created an e-card but doesn't know to make is customised within a short period of time. Mention the feature on Open Office Writer which will help him to add the names of his friends within minutes.  
a.Alignment      b.Mail Merge  
c.Orientation      d.Hyphenation
- ii. \_\_\_\_\_ function is used for correcting common misspelling and typing errors, which it corrects automatically.  
a. a.Alignment      b.Mail Merge  
c.Indentation      d.Auto Correct
- iii. Arjun was making a poster on "Save Environment". He wants to replace the word "afforestation" with "re-forestation" but doesn't know the proper feature to do so. Help him with the feature.  
a.Indentation      b.Alignment  
c.Find and Replace      d.Hyphenation
- iv. \_\_\_\_\_ is used to specify the amount of space between paragraphs and lines.  
a.Indentation      b.Spacing  
c.Orientation      d.Alignment
- v. \_\_\_\_\_ utilities are used to check the grammer and spelling in the document.  
a.Auto Text      b.Thesaurus  
c.Spelling and Grammer      d.Hyphenation
- vi. Puja wants to add similar word as "beautiful" in her document. What feature should she use to get it.  
a.Auto Text      b.Thesaurus  
c.Spelling and Grammer      d.Hyphenation
- vii. The shortcut key to select an entire document is \_\_\_\_\_.  
a.CTRL+R      b.CTRL+A  
c.CTRL+Z      d.CTRL+P
- viii. The extension of Open Office org Writer is \_\_\_\_\_.  
a..odt      b..ods      c..odp      d..odb

- ix. The shortcut key to go to the beginning of the line is \_\_\_\_\_.  
a.END      b.HOME      c.SHIFT      d.INSERT

### **SECTION B: SUBJECTIVE TYPE QUESTIONS**

**Answer the following 4 questions on  
Employability Skills(2 x4= 08marks)**

3. Name the four types of verbal communication.
4. Give any two disadvantages of non-verbal communication.
5. Mention the four qualities of self-confident people.
6. What is self-management skills?

**Answer the following 3 questions  
(2 x3= 06marks)**

7. Define: a. Mail Merge      b.Hyphenation
8. Name the two types of Page Orientation.
9. What is a word processor? Give one example of popular word processing package.

**Answer the following 2 questions  
(4 x2= 8marks)**

10. What is Subscript and Superscript features of OOo Writer? Give one example of each.
  11. (a)What is Header and Footer in OOo Writer.  
(b)What is the use of Auto Correct function and Auto Text feature in OOo Writer.
- =====

NAME: \_\_\_\_\_ SEC: \_\_\_\_\_ ROLL NO: \_\_\_\_\_  
SET-B

**BURNPUR RIVERSIDE SCHOOL, BURNPUR**

**CLASS-IX**

**PERIODIC TEST- I : [2024 - 2025]**

**SUBJECT: INFORMATION TECHNOLOGY**

**TIME: 1 ½ Hrs.**

**Maximum Marks: 40**

**General Instructions:**

1. Please read the instructions carefully.
2. This Question Paper consists of **11 questions** in two sections: Section A & Section B.
3. Section A has Objective type questions whereas Section B contains Subjective type questions.
4. **All questions are compulsory.**
5. All questions of a particular section must be attempted in the correct order.
6. **SECTION A-OBJECTIVE TYPE QUESTIONS (18 MARKS):**
  - i. This section has 02 questions.
  - ii. Marks allotted are mentioned against each question/part.
  - iii. There is no negative marking.
  - iv. Do as per the instructions given.
7. **SECTION B –SUBJECTIVE TYPE QUESTIONS (22 MARKS):**
  - i. This section has 09 questions.
  - ii. Do as per the instructions given.
  - iii. Marks allotted are mentioned against each question/part.



## **SECTION A: OBJECTIVE TYPE QUESTIONS**

1. Answer the following 9 questions on  
Employability Skills(1 X 9= 9 Marks)
- i. Which of the following is NOT classified as non verbal communication? 1  
a) Signs b) Eye Contact  
c)Body language d) Gestures
- ii. How do you receive information on phone? 1  
a) Listening b) Speaking  
c) Reading d) Writing
- iii. Which of following is not a communication skill? 1  
a) Sleeping b)Talking c)Listening d)Chatting
- iv. Proper nouns always begin with \_\_\_\_\_ letters. 1  
a)Running b)Capital c)Small d)Numerical
- v. That was a lovely evening. Lovely is a \_\_\_\_\_ 1  
a)Noun b)Pronoun c)Verb d)Adjective
- vi. What steps should one take to build confidence? 1  
a)Set goals in life b) Appreciate oneself for all the achievements  
c) Always think positively  
d) Talk to people who are confident.
- vii. In refers to a state of psychological tension and discomfort originating from unforeseen, difficult, confusing and challenging situations. 1  
a) Stress Management b) Time Management  
c)Personality Management d) Self Management
- viii. Grooming is a term associated with 1  
a) time management b) problem solving  
c)neat and clean appearance  
d)self management
- ix. Dressing and grooming are important because they help us to look \_\_\_\_\_ 1  
a)smart b)untidy c)shabby d)All of these

2. **Answer the following 9 questions**

**(1 X 9= 9 marks)**

- i. Which of the following is the default extension of the writer file ? 1  
a) .obt              b).doc              c).odt              d) .docx
- ii. To replace a word Bombay with Mumbai, we should go to which of the following menu? 1  
a) Tools Menu    b) Edit Menu    c)View Menu  
d) Language Menu
- iii. Which of the following does not come under page formatting? 1  
a) Setting margins    b)Find and replace  
c)Setting header and footer    d) Page orientation
- iv. Which shortcut key is used for automatic spell checking? 1  
a) SHIFT + INSERT              b) SHIFT + F7  
c) CTRL + INSERT              d) TAB + INSERT
- v. Which of the following is a shortcut key to Redo any operation? 1  
a) CTRL + R    b) CTRL + Y    c) CTRL + X  
d) CTRL + Z
- vi. Which option should be used to type H<sub>2</sub>O, to get 2 at its proper place? 1  
a) Bold    b) Superscript    c) Underline    d)Subscript
- vii. Keyboard shortcut to italicise the selected text is 1  
a) Ctrl + U    b) Shift + U    c) Ctrl +I    d)Shift +I
- viii. “Times New Roman” is type of : 1  
a) Font Size    b) Font Face    c)Font Style    d) Font Family
- ix. Which of the following is not valid type of data source in mail merge? 1  
a)Spreadsheet    b) Text files    c) MySQL    d)CSV file

## **SECTION B:SUBJECTIVE TYPE QUESTIONS**

**Answer the following 4 questions on  
Employability Skills (2 x 4= 8 marks)**

- |    |   |   |
|----|---|---|
| 3. | What do you mean by non-verbal communication?       | 2 |
| 4. | What do you mean by effective communication?        | 2 |
| 5. | What are the factors that affect self – confidence? | 2 |
| 6. | List any two self – management skills.              | 2 |

**Answer the following 3 questions  
(2 X 3= 6 marks)**

- |    |   |   |
|----|---|---|
| 7. | How will you count the total words of a document?   | 2 |
| 8. | Define the term word processor.   | 2 |
| 9. | What are margins in word processing terminology and how many different type of margins are? | 2 |

**Answer the following 2 questions (4 X 2= 8 marks)**

- |     |   |   |
|-----|---|---|
| 10. | i) Which two documents are essential for mail merge?                | 2 |
|     | ii) Briefly explain what the following WORD PROCESSING features do? | 2 |
|     | a) Spell Check                      b) Bullets and Numbering        |   |
| 11. | What are the different types of Alignments in open office writer?   | 4 |

=====